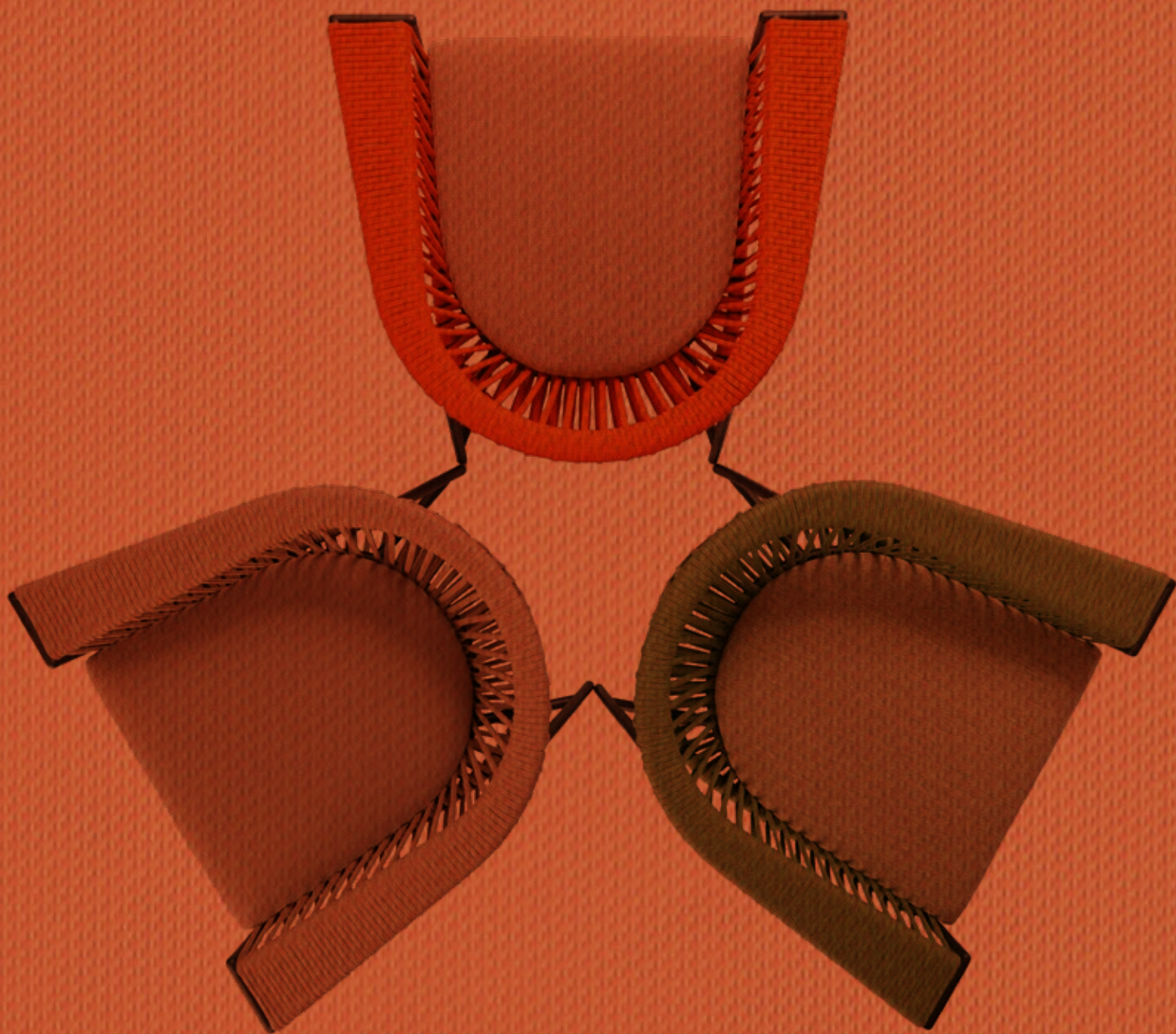


Greenfield NEW TRENDS



Roberti[®]
OUTDOOR PLEASURE

NEW TRENDS

IT_Vivi circondato dalla tua visione della bellezza: disegna il tuo spazio con arredi capaci di riflettere il tuo stile di vita e la tua personalità.

Le nostre nuove proposte sono il risultato di un design contemporaneo ideato da giovani brillanti architetti, di un'accurata selezione di materiali per outdoor altamente performanti e di un affermato know how aziendale a livello internazionale.

Ora lasciati ispirare dal nuovo lifestyle Roberti.

EN_Live surrounded by your vision of beauty: design your own space with furniture that reflects your lifestyle and personality.

Our new proposals are the result of a contemporary design created by young and brilliant architects, an accurate selection of highly performing materials for outdoor, as well as an acknowledged international company's know-how.

Get inspired by the new Roberti lifestyle.

DE_Lebe umgeben von deiner Vision der Schönheit: gestalte deinen Raum mit Möbeln, die dein Lebensstil und Persönlichkeit widerspiegeln.

Unsere neue Vorschläge sind das Ergebnis eines zeitgemäßen Designs, das von brillanten jungen Architekten entworfen wurde, einer sorgfältigen Auswahl an leistungsstarken Outdoor-Materialien und eines Know-How von einem internationalen Unternehmen.

Lasse dich jetzt vom neuen Roberti-Lebensstil inspirieren.

FR_Vivez entourés de votre vision de la beauté: concevez votre espace avec un ameublement capable de refléter votre style de vie et votre personnalité.

Nos nouvelles propositions sont le résultat d'un design contemporain créé par de jeunes architectes brillants, d'une sélection rigoureuse de matériaux d'extérieur très performants et un savoir-faire international bien établi.

Maintenant, laissez-vous inspirer par le nouveau style de vie Roberti.

Roberti®
OUTDOOR PLEASURE



DISCOVER THE NEW TRENDS

INDICE table of contents

04 | 35
Armàn

Design: Santiago Sevillano

36 | 53
Corolle

Design: Studio Pang

54 | 81
Charme

Design: Antonio De Marco
Studio Pang

82 | 107
Queen

Design: Technical Emotions
Studio Pang

108 | 117
Oasi

Design: Technical Emotions

118 | 129
Gravity

Design: Technical Emotions

130 | 135
Maratea

Design: Studio Pang

136 | 139
Technical Data & Materials

140 | 145
Fabrics & Covers

146 | 151
Drawings

Roberti[®]
OUTDOOR PLEASURE

Armàn



L'armonia e l'equilibrio sono i pilastri della filosofia della collezione Armàn, un moderno stile di vita.

Forme che esaltano spazialità e orizzontalità, con intrecci in corda che conferiscono una dimensione organica ed artigianale alla collezione.

Elementi morbidi e confortevoli creano perfette soluzioni modulari per spazi di relax e conversazione.

Le cromie proposte, sono il lifestyle di evocazione mediterranea, rivisitato in chiave contemporanea.

Harmony and balance are the pillars of the Armàn collection philosophy, representing a modern lifestyle.

Shapes that enhance spatiality and horizontality with woven ropes that give an organic and artisanal dimension to the collection.

Soft and comfortable elements create perfect modular solutions for relaxation and conversation spaces.

The suggested colour schemes evoke a Mediterranean lifestyle, reinterpreted in a contemporary way.

Harmonie und Gleichgewicht sind die Grundsäulen der Philosophie der Armàn Kollektion, einen modernen Lebensstil.

Formen, die Raum und Horizontalität hervorheben, mit geflochtenen Seilen, die der Kollektion eine organische und handwerkliche Dimension verleihen.

Weiche und komfortable Elemente schaffen perfekte modulare Lösungen für Entspannungs- und Gesprächsbereiche.

Die vorgeschlagenen Farbtöne repräsentieren einen mediterranen Lebensstil, neu interpretiert auf zeitgenössische Weise.

L'harmonie et l'équilibre sont les piliers de la philosophie de la collection Armàn, représentant un mode de vie moderne.

Les formes qui mettent en valeur la spatialité et l'horizontalité, avec des tressages en corde conférant une dimension organique et artisanale à la collection.

Des éléments doux et confortables créent des solutions modulaires parfaites pour les espaces de détente et de conversation.

Les nuances proposées reflètent le style de vie d'évocation méditerranéenne, révisité de manière contemporaine.





Arman (bronze) (foglie ocra)
art. 7137 composizione divano_sectional sofa
art. 7130H tavolino_low table h. 45 (hpl marble nut)
art. 7131H tavolino_low table h. 39 (hpl marble nut)
art. 7114 pouf



Armàn (bronze)
 art. 7130H tavolino_low table h. 45 (hpl marble nut)
 art. 7131H tavolino_low table h. 39 (hpl marble nut)

Armàn (bronze)
 art. 7118H mensola_shelf (hpl marble nut)

Armân

(bronz) (stuoia melange)
art. 7121 poltrona_armchair
art. 72A4 divano_sofa
art. 73A5 divano_sofa
art. 7130H tavolino_low table h. 45 (hpl marble nut)
art. 7131H tavolino_low table h. 39 (hpl marble nut)
art. 7130T tavolino_low table h. 46 (top terrazzo perla)
art. 7131T tavolino_low table h. 40 (top terrazzo perla)

ARMÀN IS CONVIVIALITY

Armonia ed equilibrio si fondono in un'espressione del lifestyle mediterraneo, creando spazi dove armonizzarsi con l'ambiente.

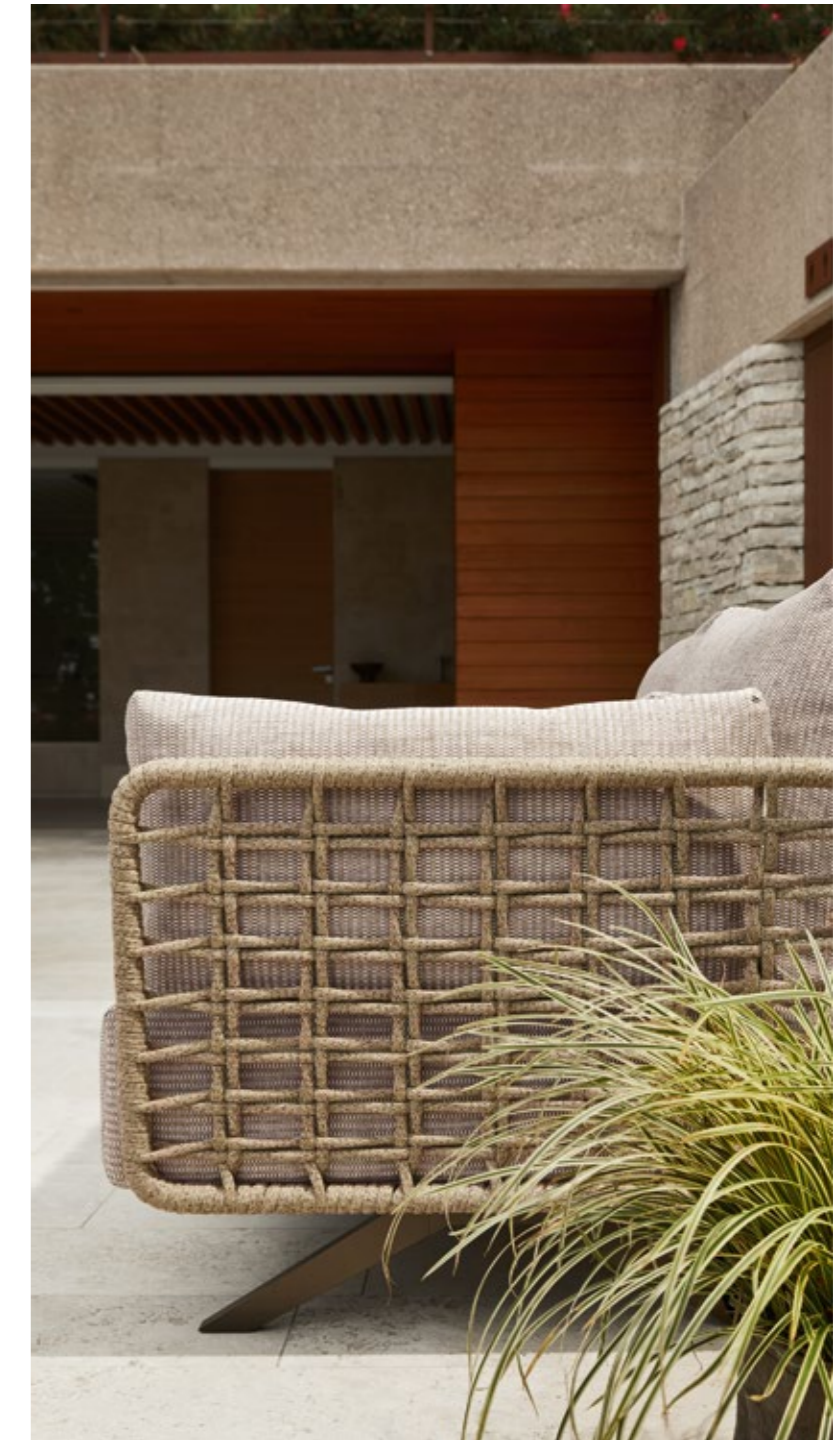
Harmony and balance blend into an expression of the Mediterranean lifestyle, creating spaces to harmonize with the environment.



Armàn (brunze) (stuoia melange)
art. 7121 poltrona_armchair
art. 72A4 divano_sofa
art. 7130T tavolino_low table h. 46 (top terrazzo perla)
art. 7131T tavolino_low table h. 40 (top terrazzo perla)



Armàn (brunze)
art. 7130H tavolino_low table h. 45 (hpl marble nut)
art. 7130T tavolino_low table h. 46 (top terrazzo perla)
art. 7131T tavolino_low table h. 40 (top terrazzo perla)





Armàn

(champagne) (pastello salvia)
art. 71A3 poltrona_armchair
art. 7139 divano_sofa
art. 7114 pouf
art. 7130T tavolino_low table h. 46 (top terrazzo perla)
art. 7131T tavolino_low table h. 40 (top terrazzo perla)



ARMÀN
IS
LEISURE



Armàn (champagne) (pastello salvia)
 art. 7139 divano_sofa
 art. 7130T tavolino_low table h. 46 (top terrazzo perla)
 art. 7131T tavolino_low table h. 40 (top terrazzo perla)

Armàn

(champagne) (pastello salvia)

art. 71A3 poltrona_armchair

art. 7130T tavolino_low table h. 46 (top terrazzo perla)

art. 7131T tavolino_low table h. 40 (top terrazzo perla)



Armàn

(champagne)

art. 7130T tavolino_low table h. 46 (top terrazzo perla)





Armàn

(champagne) (foglie oliva)
art. 7138 composizione divano_sectional sofa
art. 7130H tavolino_low table h. 45 (hpl marble white)
art. 7131H tavolino_low table h. 39 (hpl marble white)



open
shelf

Armàn (champagne)
art. 7118H mensola_shelf (hpl marble white)



Armàn (champagne) (foglie oliva)
art. 7138 composizione divano_sectional sofa

FACE TO FACE WITH THE DESIGNER

SANTIAGO
SEVILLANO

Focus on the new collection: Armàn

IT Abbiamo voluto considerare la funzionalità con un design minimalista e moderno. Forme e materiali che uniscono bellezza e comfort ad una grande versatilità, adattandosi perfettamente a ogni ambiente che sia un giardino, un terrazzo o un salotto. Gli elementi intrecciati in corda sono un invito a rilassarsi in un caldo abbraccio. La collezione trae ispirazione dalla ritualità del vivere mediterraneo, un lifestyle di convivialità e accoglienza, che racchiude i valori delle emozioni vissute intensamente.

DE Wir wollten Funktionalität mit einem minimalistischen und modernen Design in Betracht ziehen. Formen und Materialien, die Schönheit und Komfort mit großer Vielseitigkeit verbinden und sich perfekt an jede Umgebung anpassen, sei es ein Garten, eine Terrasse oder Living Area. Die geflochtenen Elemente aus Seil verführen, sich in einer warmen Umarmung zu entspannen. Die Kollektion findet ihre Inspiration von der Ritualität des mediterranen Lebens, einem Lebensstil von Geselligkeit und Gastfreundschaft, der die Werte intensiv erlebter Emotionen einschließt.

EN We aimed to incorporate functionality into a minimalist and modern design. Shapes and materials that blend beauty and comfort with great versatility, adapting seamlessly to any environment, either a garden or a terrace or a living area. Woven rope elements extend an invitation to relax in a warm embrace. The collection draws inspiration from the rituals of Mediterranean living, embodying a lifestyle of conviviality and hospitality that encapsulates the values of deeply experienced emotions.

FR Nous avons voulu prendre en compte la fonctionnalité avec un design minimaliste et moderne. Des formes et des matériaux qui allient beauté et confort à une grande polyvalence, s'adaptant parfaitement à chaque environnement, comme un jardin, une terrasse ou un lounge. Les éléments tressés en corde sont une invitation à se détendre dans une étreinte chaleureuse. La collection s'inspire de la ritualité de la vie méditerranéenne, un mode de vie fait de convivialité et d'accueil, qui renferme les valeurs des émotions vécues intensément.

ARMÀN

Ispirato al lifestyle
mediterraneo



Inspired by the
Mediterranean lifestyle



Armân

(bronz) (pied de poule verde_zaffiro laguna)
art. 78A4 daybed
art. 7130H tavolino_low table h. 45 (hpl marble nut)
art. 7130T tavolino_low table h. 46 (top terrazzo perla)
art. 7131H tavolino_low table h. 39 (hpl marble nut)
art. 7131T tavolino_low table h. 40 (top terrazzo perla)



Armàn (bronzè) (pied de poule verde_zaffiro laguna)
art. 78A4 daybed
art. 7130H tavolino_low table h. 45 (hpl marble nut)
art. 7130T tavolino_low table h. 46 (top terrazzo perla)
art. 7131H tavolino_low table h. 39 (hpl marble nut)
art. 7131T tavolino_low table h. 40 (top terrazzo perla)



Armàn (bronzè) (pied de poule verde_zaffiro laguna)
art. 78A4 daybed
art. 7130T tavolino_low table h. 46 (top terrazzo perla)
art. 7131H tavolino_low table h. 39 (hpl marble nut)

ARMÀN HAS A SPECIAL ALLURE

Gli elementi intrecciati in corda enfatizzano l'eleganza e l'armonia della collezione.

The woven rope elements emphasize the elegance and harmony of the collection.



Armàn (bronze) (pied de poule verde_zaffiro laguna)
art. 78A4 daybed
art. 7130H tavolino_low table h. 45 (hpl marble nut)
art. 7130T tavolino_low table h. 46 (top terrazzo perla)
art. 7131T tavolino_low table h. 40 (top terrazzo perla)



Armàn art. 7130H tavolino_low table h. 45 (hpl marble nut)
art. 7131T tavolino_low table h. 40 (top terrazzo perla)



Armàn

(champagne) (pied de poule arancio)
art. 75A2 chaise longue
art. 7130H tavolino_low table h. 45 (hpl marble white)
art. 7131H tavolino_low table h. 39 (hpl marble white)

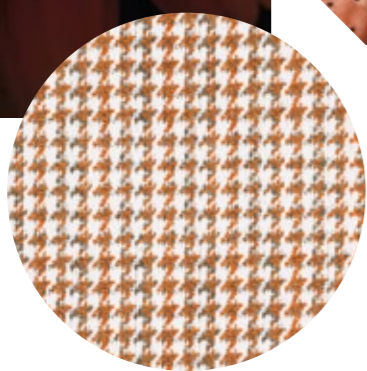


Armàn (champagne) (pied de poule arancio)
art. 7115+7100 chaise longue
art. 7130H tavolino_low table h. 45 (hpl marble white)



Armàn (champagne) (pied de poule arancio)
art. 7115+7100 chaise longue
art. 7130H tavolino_low table h. 45 (hpl marble white)

Corolle



Nella nuova collezione Corolle, la solidità del metallo incontra la morbidezza della corda. Attraverso il colore, il dialogo tra i materiali esprime l'intensità delle forme e delle geometrie contemporanee e tridimensionali. Le proprietà della corda ovalizzata rendono le sedute comode ed avvolgenti.

In the new Corolle collection, the strength of metal meets the softness of rope. Through colour, the interplay between materials expresses the intensity of contemporary and three-dimensional forms and geometries. The features of the ovalized rope make the seating comfortable and enveloping.

In der neuen Corolle Kollektion trifft die Solidität des Metalls auf die Weichheit des Seils. Durch die Farbwahl drückt der Dialog zwischen den Materialien die Intensität der zeitgenössischen und dreidimensionalen Formen und Geometrien aus. Die Eigenschaften des ovalisierten Seils machen das Sitzen bequem und einhüllend.

Dans la nouvelle collection Corolle, la solidité du métal rencontre la douceur de la corde. À travers la couleur, le dialogue entre les matériaux exprime l'intensité des formes et des géométries contemporaines et tridimensionnelles. Les propriétés de la corde ovalisée rendent les assises confortables et enveloppantes.



Corolle (graphite_oval trendyrope orange mix) (pied de poule arancio_fiori arancio)
art. 4451 poltrona_armchair



Corolle (graphite_oval trendyrope orange mix) (pied de poule arancio_fiori arancio)
art. 4451 poltrona_armchair
art. 4452 divano_sofa
art. 4455H tavolino_low table h. 38 (hpl slate stone)
art. 4456H tavolino_low table h. 28 (hpl slate stone)

Corolle (graphite_oval trendyrope walnut mix)
(mosaic oromix_pied de poule arancio_fiori arancio)
art. 4452 divano_sofa



Corolle (graphite_oval trendyrope walnut mix) (mosaic oromix_pied de poule arancio_fiori arancio)
art. 4452 divano_sofa





Corolle (graphite_oval trendyrope walnut mix) (mosaic oromix_pied de poule arancio_fiori arancio)
art. 4452 divano_sofa
art. 4456H tavolino_low table h. 28 (hpl slate stone)



Corolle (graphite_oval trendyrope orange mix) (pied de poule arancio_fiori arancio)
art. 4451 poltrona_armchair



Corolle (graphite_oval trendyrope walnut mix_orange mix_mint mix) (pastello nocciola_pastello salvia_zaffiro ecru)
 art. 4451 poltrona_armchair
 art. 4455H tavolino_low table h. 38 (hpl slate stone)
 art. 4456H tavolino_low table h. 28 (hpl slate stone)

COROLLE
 IS
 HAPPINESS

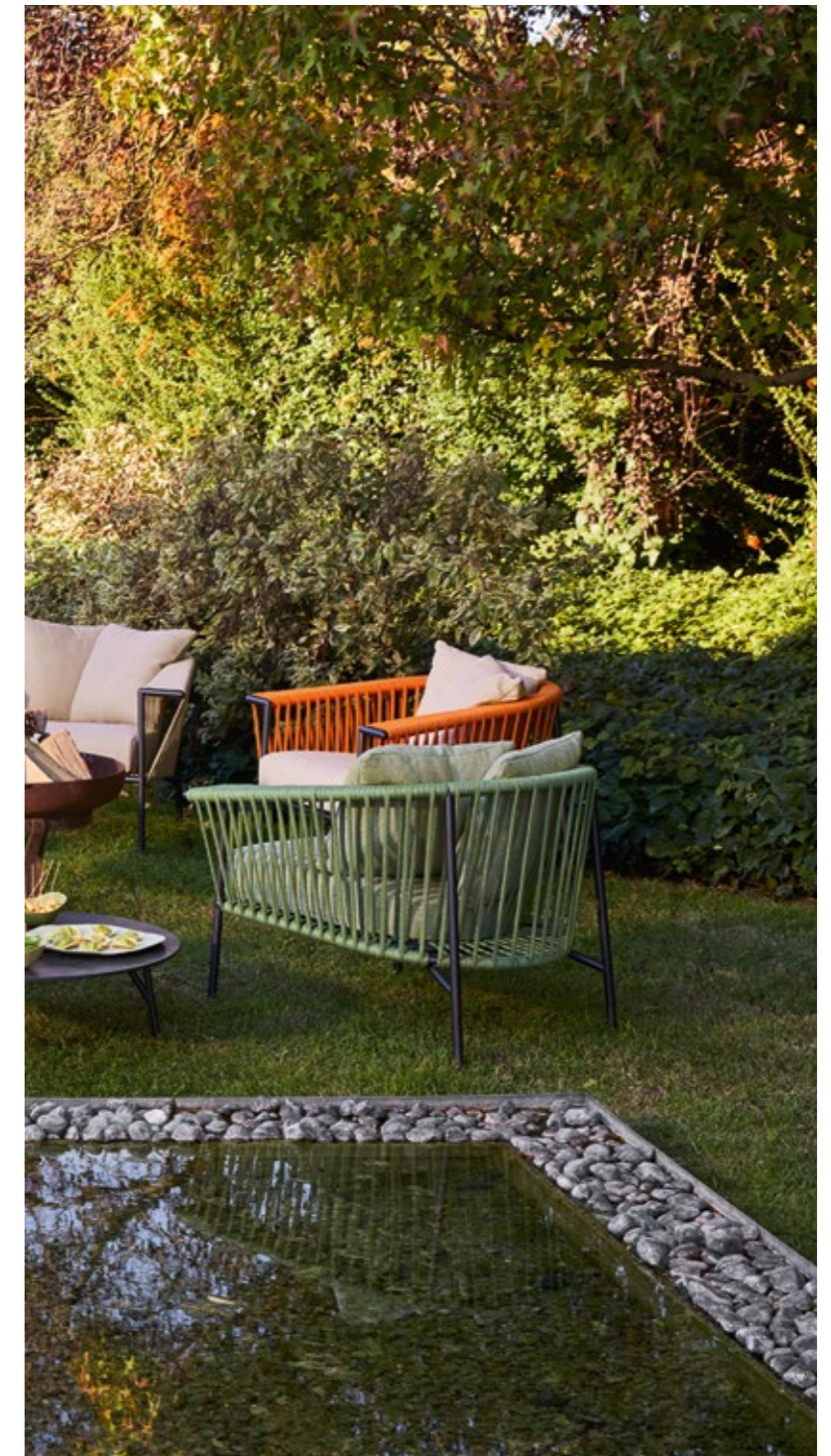
COROLLE IS COLOURFUL

Il dialogo cromatico con la natura, interpreta il mood contemporaneo per una visione di outdoor senza limiti.

The chromatic dialogue with nature interprets the contemporary mood for an outdoor vision with no limits.



Corolle (graphite_oval trendyrope walnut mix_orange mix_mint mix) (pastello nocciola_pastello salvia_zaffiro ecru)
 art. 4451 poltrona_armchair
 art. 4455H tavolino_low table h. 38 (hpl slate stone)
 art. 4456H tavolino_low table h. 28 (hpl slate stone)

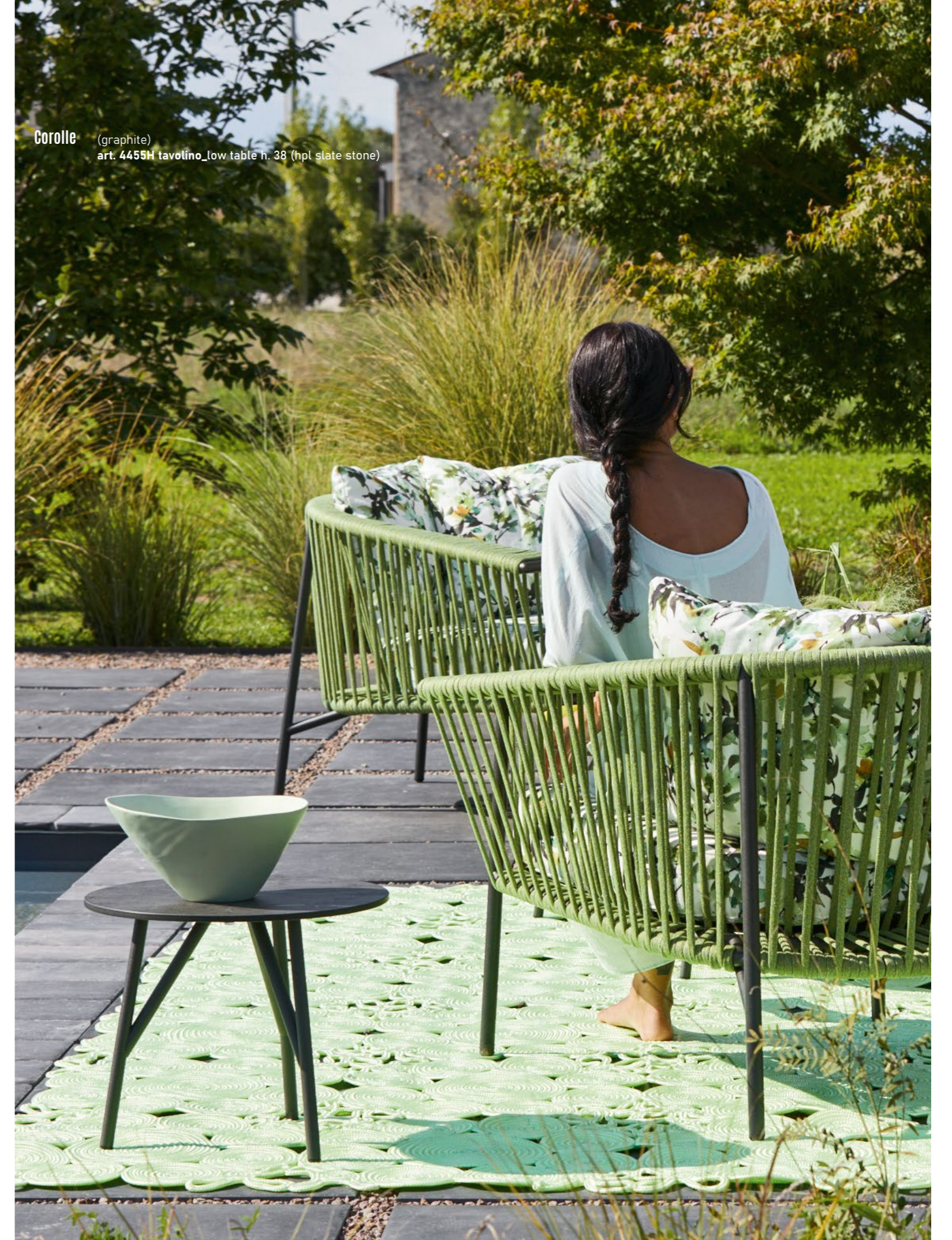




Corolle (graphite_oval trendyrope mint mix) (pied de poule verde_fiori lime)
art. 4451 poltrona_armchair
art. 4452 divano_sofa
art. 4455H tavolino_low table h. 38 (hpl slate stone)
art. 4456H tavolino_low table h. 28 (hpl slate stone)



Corolle (graphite_oval trendyrope mint mix) (pied de poule verde_fiori lime)
 art. 4451 poltrona_armchair
 art. 4452 divano_sofa
 art. 4455H tavolino_low table h. 38 (hpl slate stone)
 art. 4456H tavolino_low table h. 28 (hpl slate stone)

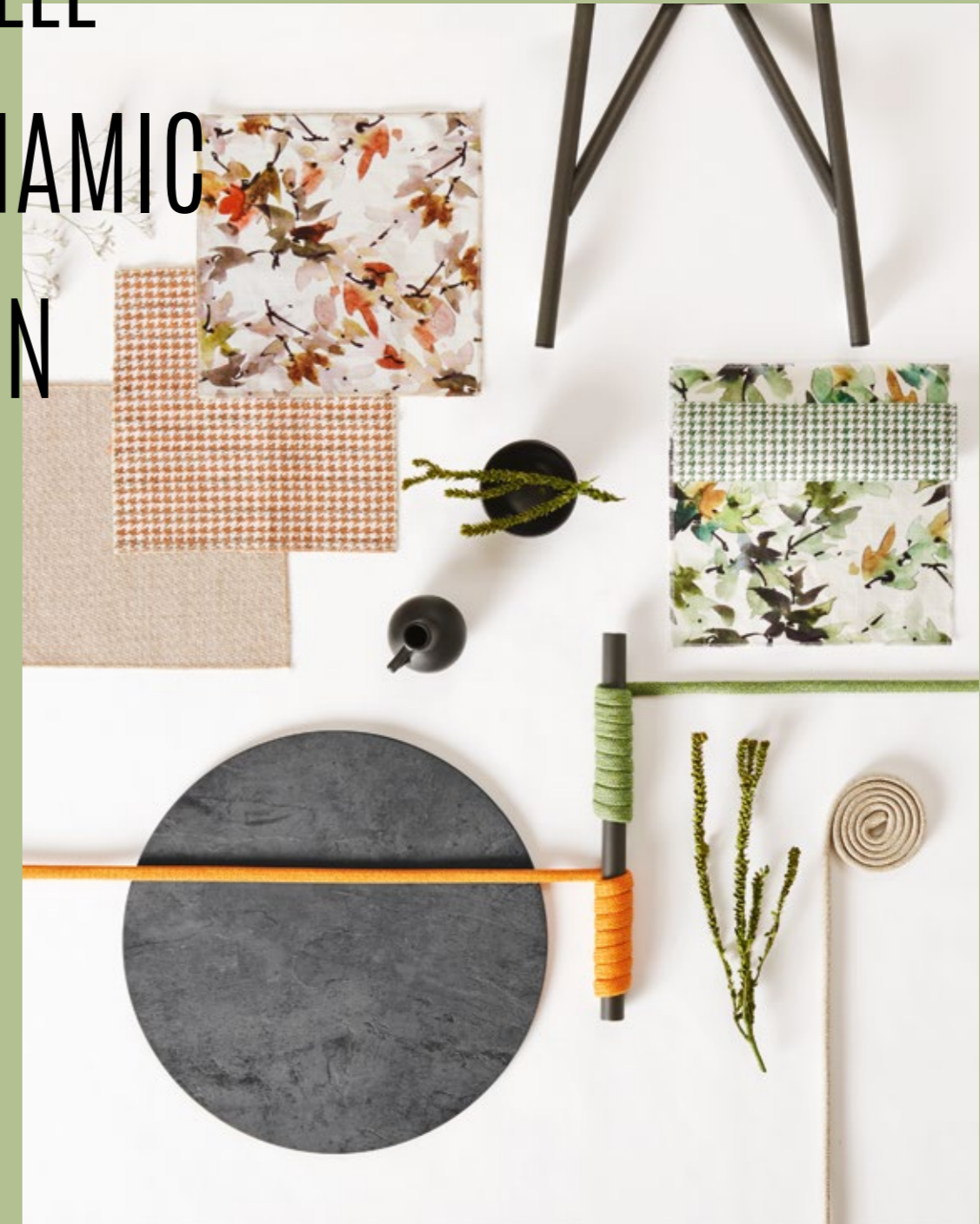


Corolle (graphite)
 art. 4455H tavolino_low table n. 38 (hpl slate stone)



Corolle (graphite_oval trendyrope mint mix) (fiori lime)
art. 4451 poltrona_armchair
art. 4455H tavolino_low table h. 38 (hpl slate stone)
art. 4456H tavolino_low table h. 28 (hpl slate stone)

COROLLE IS DINAMIC DESIGN



FACE TO FACE WITH THE DESIGNER



Focus on the new collections: Corolle_Queen Goa

IT_Con la collezione Corolle abbiamo voluto evocare naturalità, comfort e ricercatezza. Un confronto inatteso tra il telaio in metallo e l'intreccio unico nel suo genere, insieme creano volume, ma allo stesso tempo leggerezza con un linguaggio informale, ma approfondito e curato. Il colore è il trait d'union per un'ambientazione inaspettata e visionaria.

La sedia Queen_Goa trae ispirazione dalle forme sinuose della natura. Un alternarsi di curve, geometrie e texture, in un'espressione di stile trasversale, con note di personalità diverse, ma sempre incisive.

DE_Mit der Corolle Kollektion wollten wir Natürlichkeit, Komfort und Raffinesse hervorrufen. Ein unerwarteter Vergleich zwischen dem Metallrahmen und dem einzigartigen Geflecht schafft zusammen Volumen und gleichzeitig Leichtigkeit, mit einer informellen, aber gründlichen und gepflegten Sprache. Die Farbe dient als Bindeglied für ein unerwartetes und visionäres Ambiente. Der Queen_Goa-Stuhl lässt sich von den geschwungenen Formen der Natur inspirieren. Ein Wechselspiel aus Kurven, Geometrien und Texture in einer Ausdrucksweise von vielfältigem Stil, mit unterschiedlichen Noten, aber stets auffallenden Persönlichkeiten.

STUDIO
PANG

EN_With Corolle collection, we aimed to evoke naturalness, comfort and sophistication. An unexpected dialogue between the metal frame and the uniquely intertwined elements creates volume while maintaining a sense of lightness. The result is an informal yet thoughtfully crafted language. Colour serves as the common thread for an unexpected and visionary setting.

The Queen_Goa chair draws inspiration from the sinuous forms of nature. An interplay of curves, geometries and textures creates a transversal expression of style with notes of various yet always impactful features.

FR_Avec la collection Corolle, nous avons voulu évoquer la naturalité, le confort et la sophistication. Une confrontation inattendue entre le cadre en métal et l'entrelacement unique en son genre crée ensemble du volume tout en conservant une légèreté, avec un langage informel mais approfondi et soigné. La couleur est le lien pour une mise en scène inattendue et visionnaire. La chaise Queen_Goa puise son inspiration dans les formes sinueuses de la nature. Un jeu de courbes, géométries et textures crée une expression de style transversale, avec des notes de personnalités différentes mais toujours marquantes.



sensazione e
piacere



QUEEN_GOA

COROLLE

sensation and
pleasure



CHARME



Nata dalla fusione tra due desideri apparentemente contrapposti, il comfort e la libertà, la collezione Charme propone un'eleganza innovativa, la leggerezza della tessitura e il design avvolgente, dove la corda trova la sua massima espressione in uno stile contemporaneo dalla forte identità.

Created by the fusion of two desires apparently opposite to each other, comfort and freedom, Charme collection conveys an innovative elegance, a lightness of the weaving and a cosy design in which the rope represents its highest expression in a contemporary style and a strong identity.

Die Charme-Kollektion wurde aus der Verschmelzung zweier scheinbar gegensätzlicher Wünsche, Komfort und Freiheit, geboren und bietet eine innovative Eleganz. Die Leichtigkeit der Webart und das umhüllende Design, bei dem das Seil seinen maximalen Ausdruck in einem zeitgenössischen Stil mit einer starken Identität findet.

Conçue comme fusion de deux désirs apparemment opposés, confort et liberté, la collection Charme offre une élégance innovante, la légèreté du tressage et le design enveloppant, où la corde trouve son expression maximale dans un style contemporain avec une forte identité.



Charme (bronze_flat trendyrope cocoa mix) (hazel_almond brown)
art. 4384B poltrona relax_relax armchair
art. 4386T tavolino basso_low table h. 42 (top terrazzo perla)



Charme (bronze_flat trendyrope cocoa mix) (senape_haze_almond brown)
art. 4384B poltrona relax_relax armchair art. 4382B divano_sofa
art. 4386T tavolino basso_low table h. 42 (top terrazzo perla) art. 4387T tavolino basso_low table h. 36 (top terrazzo perla)



Charme (brnze_flat trendyrope cocoa mix) (hazel_senape)
 art. 4381B poltrona_armchair art. 4382B divano_sofa
 art. 4386H tavolino_basso_low table h. 41 (hpl marble nut) art. 4387H tavolino_basso_low table h. 35 (hpl marble nut)



Charme (brnze_flat trendyrope cocoa mix) (hazel_senape)
 art. 4385B dondolo_rocking armchair

CHARME TALKS ABOUT ELEGANCE

Un'appassionata ricerca della bellezza, intesa come vocazione, per creare ambienti confortevoli e suggerire una nuova visione dell'abitare outdoor.

A passionate search of beauty as mission to design comfortable settings and to suggest a new vision of outdoor living.



Charme (bronze_flat trendyrope cocoa mix) (senape_hazel_almond brown)

art. 4384B poltrona relax_relax armchair
art. 4382B divano_sofa
art. 4386T tavolino basso_low table h. 42 (top terrazzo perla)
art. 4387T tavolino basso_low table h. 36 (top terrazzo perla)

RELAXING



Charme (bronze_flat trendyrope cocoa mix) (hazeL_almond brown)
art. 4384B poltrona relax_relax armchair art. 4386T tavolino basso_low table h. 42 (top terrazzo perla) art. 4387T tavolino basso_low table h. 36 (top terrazzo perla)



Charme (bronze_flat trendyrope cocoa mix) (hazel)
art. 4371B sedia_chair art. 4375 tavolo_table (hpl marble nut)



Charme (bronze_flat trendyrope cocoa mix) (hazel)
art. 4371B sedia_chair art. 4375 tavolo_table (hpl marble nut)



ANTONIO
DE MARCO

FACE TO FACE WITH THE DESIGNER

Focus on the collection: Charme

IT La collezione è nata con la volontà di enfatizzare la corda: ho pensato allo scopo per cui viene usata e questo mi ha portato a lavorare con la tensione, il naturale sforzo per cui le corde sono sempre state prodotte.

Per enfatizzare questa caratteristica è stato quindi necessario creare un telaio che fosse essenziale ma robusto, messo sotto tensione dalla corda stessa. Sono quindi nati quasi naturalmente gli schienali della collezione Charme: la corda si avvolge sul telaio creando una geometria più densa al centro e più rarefatta ai bordi. Ogni parte dello schienale sorregge la schiena adattandosi con naturalezza. Un comfort incredibile, dove l'intreccio ne è il vero artefice.

DE Die Kollektion wurde mit dem Wunsch geboren, den Einsatz des Seils zu betonen: Ich dachte über den Zweck nach, für den es verwendet wird, und dies führte mich dazu, mit perfekter Spannung zu arbeiten, über die natürlichen Anstrengung, für die das Seil immer produziert wurde.

Um dieses Merkmal hervorzuheben, war es daher notwendig, ein Gestell zu schaffen, der wesentlich, aber robust war und durch das Seil selbst unter Spannung gesetzt wurde. Die Rückenlehnen der Charme-Kollektion wurden daher fast auf natürliche Weise geboren: das Seil wickelt sich um den Rahmen, wodurch eine dichtere Geometrie in der Mitte entsteht und die Kanten dünner werden. Jedes Teil der Rückenlehne stützt den Rücken durch eine perfekte Anpassung. Ein unglaublicher Komfort, bei dem das Geflecht der wahre Schöpfer ist.

EN The collection has been conceived with the aim of emphasizing the rope: I have thought about the purpose for which the rope is used, this has led me to work with the stretch, the natural effort for which the ropes have always been produced. To emphasize this feature it has been necessary to create a simple structure yet strong, put under tension by the rope itself.

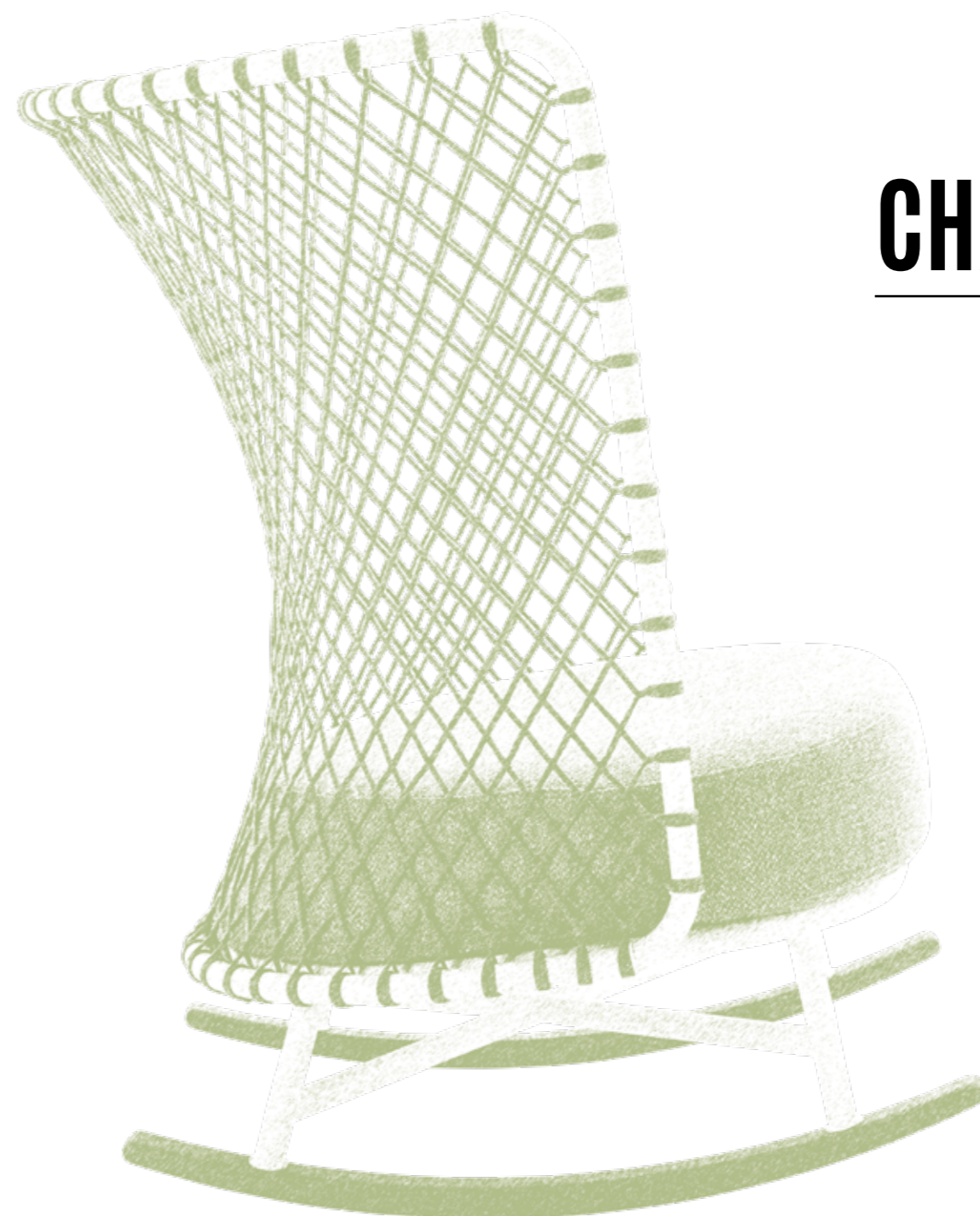
The back elements of Charme collection are the natural result of this design concept: the rope wraps around the frame, showing a tight geometric weaving in the middle, and wider at the edges. Each part of the back element naturally supports the back of users. An extraordinary comfort, where the weaving plays the main role.

FR La collection a été conçue avec l'envie de mettre en valeur la corde: j'ai réfléchi au but pour lequel elle est utilisée et cela m'a conduit à travailler avec la tension, l'effort naturel pour lequel les cordes ont toujours été produites.

Pour mettre en valeur cette caractéristique, il fallait donc créer une structure essentielle mais robuste, mis sous tension par la corde elle-même.

Les dos de la collection Charme sont donc nés presque naturellement: la corde s'enroule autour du cadre créant une géométrie plus dense au centre et plus raréfiée vers les bords.

Chaque partie soutient le dos en s'adaptant de manière naturelle. Un confort incroyable, où le tressage est le véritable créateur.



La ricerca di equilibrio
fra tensione e leggerezza

CHARME



Search for balance
between stretch and lightness



Charme (white_flat trendyrope white mix) (zaffiro ecru_almond milk)
art. 4381 poltrona_armchair art. 4382 divano_sofa
art. 4386T tavolino basso_low table h. 42 (top terrazzo perla) art. 4387T tavolino basso_low table h. 36 (top terrazzo perla)



Charme (white_flat trendyrope white mix) (zaffiro ecru_almond milk)
art. 4381 poltrona_armchair **art. 4382** divano_sofa
art. 4386T tavolino basso_low table h. 42 (top terrazzo perla) **art. 4387T** tavolino basso_low table h. 36 (top terrazzo perla)



Charme (white_flat trendyrope white mix) (zaffiro ecru_almond milk)
art. 4381 poltrona_armchair **art. 4386T** tavolino basso_low table h. 42 (top terrazzo perla) **art. 4387T** tavolino basso_low table h. 36 (top terrazzo perla)



Charme (white_flat trendyrope white mix) (zaffiro ecru_zaffiro cielo)
art. 4385 dondolo_rocking armchair art. 4384 poltrona relax_relax armchair
art. 4387T tavolino basso_low table h. 36 (top terrazzo perla)



Charme (white_flat trendyrope white mix) (zaffiro ecru)
art. 4385 dondolo_rocking armchair
art. 4387T tavolino basso_low table h. 36 (top terrazzo perla)



Charme (white)
art. 4386T tavolino basso_low table h. 42 (top terrazzo perla)
art. 4387T tavolino basso_low table h. 36 (top terrazzo perla)





Charme (white_flat trendyrope white mix) (zaffiro ecru)
art. 4371 sedia_chair
art. 4376 tavolo_table (hpl marble white)



INSPIRED BY NATURE

Cromatismi e sensazioni ispirati all'immaginario naturale, per offrire straordinarie esperienze di relax connesse con l'ambiente circostante.

Colours and sensations inspired by the natural imaginary, to offer an unique experience of relaxation connected with the environment.



Charme (white_flat trendyrope white mix) (zaffiro ecru)
art. 4371 sedia_chair
art. 4376 tavolo_table (hpl marble white)



Charme (white_flat trendyrope green mix) (zaffiro laguna)
art. 4371 sedia_chair
art. 4376 tavolo_table (hpl marble white)





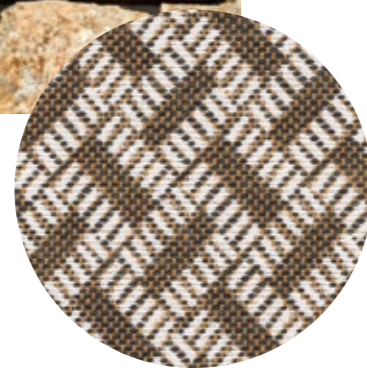
Charme (white_flat trendyrope green mix) (zaffiro laguna_zaffiro cielo)
art. 4381 poltrona_armchair art. 4382 divano_sofa
art. 4385 dondolo_rocking armchair art. 4386T tavolino basso_low table h. 42 (top terrazzo perla)

CHARME
IS
NATURAL



Charme (white_flat trendyrope green mix) (zaffiro laguna)
art. 4384 poltrona relax_relax armchair
art. 4384H tavolino_basso_low table h. 41 (hpl marble white) art. 4387H tavolino_basso_low table h. 35 (hpl marble white)

QUEEN



Comfort e bellezza: la collezione Queen parla attraverso il linguaggio dello stile. Elementi preziosi interpretano scenari mediterranei, dove lo spazio è pensato come un luogo in cui liberare la mente in perfetta armonia.

Comfort and beauty: Queen collection expresses itself through the language of style. Valuable elements read Mediterranean sceneries where the space is a freedom journey of the imagination.

Komfort und Schönheit: die Queen-Kollektion drückt sich mit der Sprache des Stils aus. Wertvolle Elemente schenken einen mediterranen Überblick, in denen der Raum als Ort betrachtet wird, um den Geist in perfekter Harmonie zu befreien.

Confort et beauté: la collection Queen parle à travers le langage du style. Des éléments précieux interprètent des scénarios méditerranéens, où l'espace est pensé comme un lieu de libération de l'esprit en parfaite harmonie.



Queen (bronze_round trendyrope ebony) (hazeL_almond brown)
art. 4430 chaise longue
Charme (bronze)
art. 4386H tavolino basso_low table h. 41 (hpl marble nut)



Queen (bronze_round trendyrope ebony) (hazel_almond brown)
art. 4430 chaise longue
Charme (brönze)
art. 4386H tavolino basso_low table h. 41 (hpl marble nut)
art. 4387H tavolino basso_low table h. 35 (hpl marble nut)



Queen (bronze_round trendyrope ebony) (hazeL_almond brown)
art. 4430 chaise longue
Charme (bronze)
art. 4386H tavolino basso_low table h. 41 (hpl marble nut)
art. 4387H tavolino basso_low table h. 35 (hpl marble nut)



Charme (bronze)
art. 4386H tavolino basso_low table h. 41 (hpl marble nut)
art. 4387H tavolino basso_low table h. 35 (hpl marble nut)





Queen

(bronze_round trendyrope ebony) (arabesque)

art. 4431 poltrona_armchair art. 4433 divano_sofa art. 4428H tavolino basso_low table h. 18 (hpl marble nut)

Charme

(bronze)

art. 4386H tavolino basso_low table h. 41 (hpl marble nut) art. 4387H tavolino basso_low table h. 35 (hpl marble nut)

QUEEN HAS A SPECIAL TOUCH

Un'estetica leggera, dove giochi di trasparenze e tonalità naturali si fondono, per esprimere il piacere di vivere il proprio tempo.

Light aesthetic where transparency and natural shades blend and express the pleasure of living your own time.



Queen (bronze_round trendyrope ebony) (arabesque)
art. 4433 divano_sofa



Queen (bronze_round trendyrope ebony) (arabesque)
art. 4431 poltrona_armchair
art. 4428H tavolino_basso_low table h. 18 (hpl marble nut)



Queen (bronze_round trendyrope ebony) (fiordaliso night_fiordaliso art_mosaic blu)
art. 4440 divano ad angolo_corner sofa
art. 4428H tavolino basso_low table h. 18 (hpl marble nut)
Charme (bronze)
art. 4386H tavolino basso_low table h. 41 (hpl marble nut)



Queen (bronze_round trendyrope ebony) (fiordaliso night_fiordaliso art_mosaic blu)
art. 4440 divano ad angolo_corner sofa
Charme (bronze)
art. 4386H tavolino basso_low table h. 41 (hpl marble nut) **art. 4387H** tavolino basso_low table h. 35 (hpl marble nut)

QUEEN, SEDUCTION AND BEAUTY

L'alternarsi di forme armoniose, geometrie e texture crea un'estetica delicata e trasversale, espressione di visioni contemporanee.

The interplay of harmonious forms, geometries and textures creates a delicate and transversal aesthetics, expressing contemporary visions.



Queen_Goa (bronze) (senape) art. 4411 sedia_chair

Queen (bronze) art. 4476H tavolo_table (hpl marble nut)



Queen_Goa (bronze) (senape) art. 4411 sedia_chair



Queen_Goa (white) (pied de poule arancio)
art. 4411 sedia_chair
Queen (white)
art. 4470H tavolo_table (hpl marble white)





QUEEN
IS ABOUT
STYLE



Queen (white_round trendyrope ivory) (zaffiro cielo_petra sabbia)
art. 4431 poltrona_armchair art. 4435 divano_sofa art. 4428H tavolino basso_low table h. 18 (hpl marble white)
Charme (white)
art. 4386H tavolino basso_low table h. 41 (hpl marble white)



Queen

(white_round trendyrope ivory) (zaffiro cielo_petra sabbia)
art. 4431 poltrona_armchair art. 4435 divano_sofa art. 4428H tavolino basso_low table h. 18 (hpl marble white)

Charme

(white)
art. 4386H tavolino basso_low table h. 41 (hpl marble white)



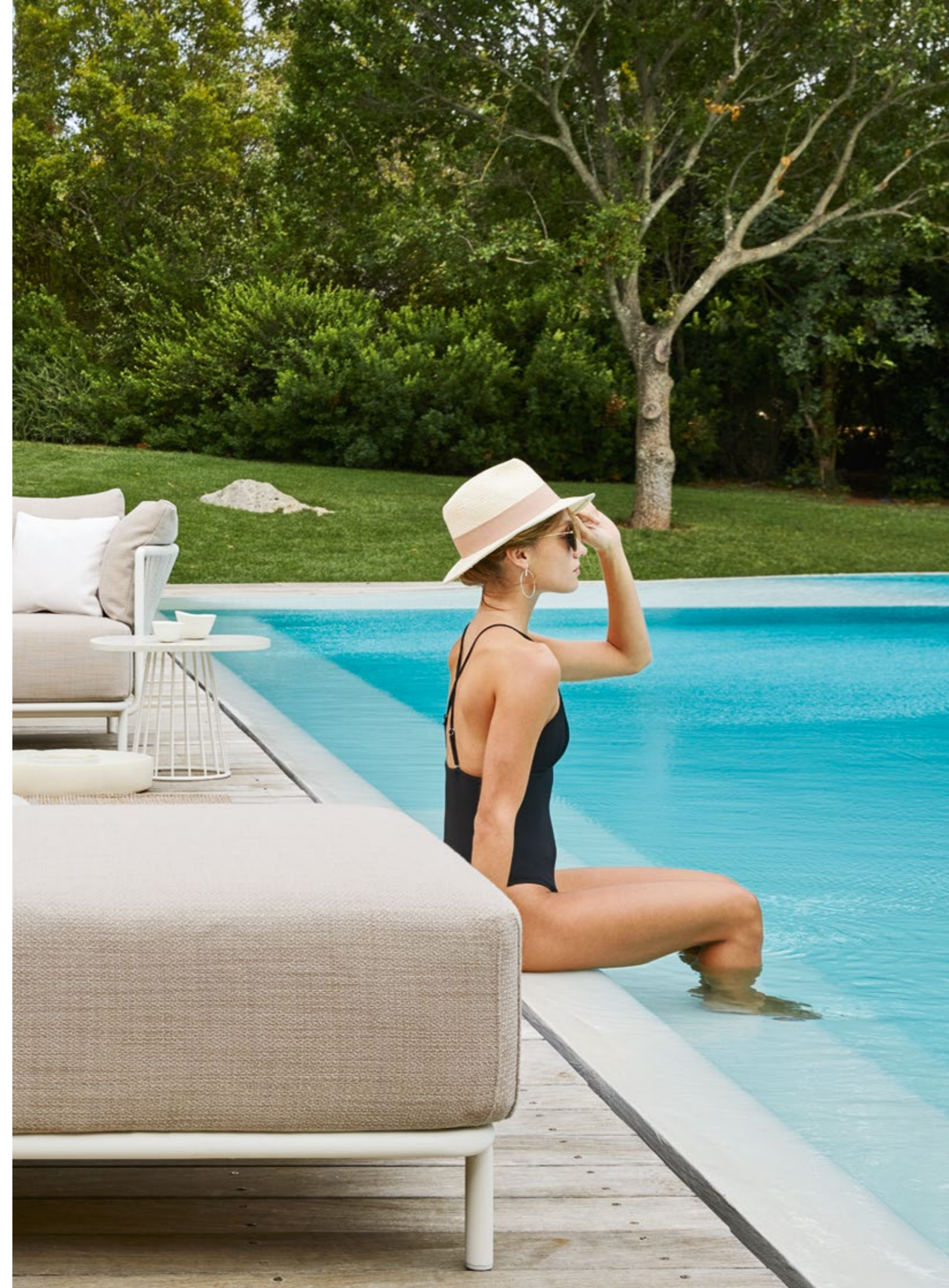
Queen (white_round trendyrope ivory) (zaffiro cielo_petra sabbia)
 art. 4431 poltrona_armchair
 art. 4435 divano_sofa
 art. 4428H tavolino basso_low table h. 18 (hpl marble white)



Queen (white_round trendyrope ivory) (zaffiro ecru_almond milk_trama bianca)
 art. 4430 chaise longue
Charme (white)
 art. 4386T tavolino basso_low table h. 42 (top terrazzo perla)



Queen (white_round trendyrope ivory) (zaffiro ecru_trama bianca)
art. 4431 poltrona_armchair





Queen (white_round trendyrope ivory) (zaffiro_ecru_almond_milk_trama bianca)
art. 4431 poltrona_armchair **art. 4439** divano_ad_angolo_corner sofa **art. 4430** chaise longue
Charme (bronzes)
art. 4386T tavolino_basso_low table h. 42 (top terrazzo perla) **art. 4387T** tavolino_basso_low table h. 36 (top terrazzo perla)



FACE TO FACE WITH THE DESIGNER

TECHNICAL
EMOTIONS

Focus on the collections: Oasi_Queen

IT _Avendo come linee guida: relax, comfort e stile, abbiamo disegnato per e con Roberti le due nuove collezioni Oasi e Queen, creando elementi versatili e sensuali, capaci di emozionare e colpire i sensi. Le collezioni sono ispirate alla brezza e alle morbide forme della natura.

Cercando un dialogo con il vento, Oasi si trasforma in un rifugio all'aperto, avvolgente ed intimo, dove rilassarsi. Queen, con le sue comode forme e trasparenze, abbraccia con morbidezza e si insinua con eleganza per creare un sistema di sedute dove trascorrere i momenti di convivialità con stile e massimo comfort.

DE _Nach den Richtlinien Entspannung, Komfort und Stimmung haben wir für und mit Roberti die neuen Kollektionen Oasi und Queen entworfen, die vielseitige und sinnliche Elemente schaffen, die die Sinne begeistern und beeindrucken können. Die Kollektionen sind von der Brise und den weichen Formen der Natur inspiriert. Auf der Suche nach einem Dialog mit dem Wind, verwandelt sich Oasi in eine einhüllende und intime Zuflucht im Freien, in der man sich entspannen kann. Queen mit seinen feine und leichten Formen ist wie eine sanfte Umarmung und schleicht sich elegant ein, um ein Sitzsystem zu schaffen, in den Momente der Geselligkeit mit Stil und maximalem Komfort zu verbringen.

EN _The new collections Oasi and Queen have been designed considering relaxation, comfort and style, creating sensual and dynamic elements able to evoke positive emotions and touch the senses. The collections are inspired by the breeze and the flowing curves of nature. Oasi is an outdoor shelter, cosy and private, where you can relax in synergy with nature. Queen, with its soft shapes and transparency, embraces gently and fits with elegance creating an appeal across the range of pieces suited to gatherings and conversations areas with a distinctive style and maximum comfort.

FR _Ayant comme lignes directrices: détente, confort et style, nous avons conçu pour et avec Roberti les deux nouvelles collections Oasi et Queen, créant des éléments polyvalents et sensuels, capables de palpiter et de exciter les sens. Les collections s'inspirent de la brise et des formes douces de la nature. A la recherche d'un dialogue avec le vent, Oasi se transforme en un refuge dehors, enveloppant et privé où vous pouvez bien vous détendre. Queen, avec ses formes confortables et ses transparences, embrasse doucement et se présente avec élégance pour créer un système d'assise où vous pouvez passer des moments de convivialité avec style et confort maximum.



OASI

Inspirate dalla brezza
e dalle forme naturali

QUEEN

Inspired by the breeze
and natural shapes



OASI



Una proposta affascinante, che esalta lo stile senza compromessi. Un ritorno ancestrale alle origini per ritrovare, attraverso un design esclusivo e personale, la sensazione di armonia con la natura ed il piacere di vivere l'outdoor.

A charming proposal that enhances the style without compromises. A return to the origins to find, through an exclusive and individual design concept, the sense of harmony with nature and the pleasure to enjoy the outdoor experience.

Ein charmanter Vorschlag, der den Stil ohne Kompromisse erhebt. Eine Rückkehr zu den Ursprüngen, um durch ein exklusives und persönliches Design das Gefühl der Harmonie mit der Natur und das Vergnügen, im Freien zu leben, wiederzuentdecken.

Une proposition fascinante, qui rehausse le style sans compromis. Un retour ancestral aux origines pour redécouvrir, à travers un design exclusif et personnel, la sensation d'harmonie avec la nature et le plaisir de vivre en plein air.



Oasi (forest_round trendyrope grass_round trendyrope turquoise)
(zaffiro laguna_zaffiro cielo)
art. 4391 lounge rotondo a baldacchino_canopied round lounge



Oasi (forest_round trendyrope grass_round trendyrope turquoise) (zaffiro laguna_zaffiro cielo)
art. 4391 lounge rotondo a baldacchino_canopied round lounge

OASI IS VISIONARY

Grazie a dettagli sorprendenti e ad una profonda ricerca di armonie cromatiche, Oasi diventa un vero e proprio elemento decorativo adatto ad esaltare lo spazio.
Un rifugio intimo in armonia con gli elementi naturali.

Thanks to impressive details and deep search for chromatic harmony, Oasi becomes a real sophisticated piece of furniture that enhances and fits harmoniously in any place. An intimate shelter in harmony with natural elements.



Oasi (forest)
(round trendyrope grass_round trendyrope turquoise)



Oasi (white)
(round trendyrope clay_round trendyrope nut)



Oasi (white_round trendyrope clay_round trendyrope nut) (zaffiro ecru_almond milk)
art. 4390 **lounger rotondo a baldacchino**_canopied round lounger



Oasi (white_round trendyrope clay_round trendyrope nut) (zaffiro ecru_almond milk) art. 4390 lounge rotondo a baldacchino_canopied round lounge

GRAVITY



La collezione esplora un nuovo percorso progettuale grazie all'ultima versione dell'iconico divano-dondolo Gravity, il quale mantiene la caratteristica seduta ma con nuove soluzioni di struttura interpretate in modo raffinato e prezioso.

The collection explores a new project path thanks to the last version of the iconic swing sofa Gravity that keeps its distinctive seat, but launching new refined and elegant frames.

Die Kollektion erforscht dank der neuesten Version des ikonischen Gravity-Schaukelsofas, das den charakteristischen Sitz beibehält, neue Strukturlösungen, die auf raffinierte und kostbare Weise interpretiert werden.

La collection explore une nouvelle voie de conception grâce à la dernière version de l'iconique swing sofa Gravity, qui conserve le siège caractéristique mais avec nouvelles solutions de structure interprétées de manière raffinée et précieuse.



Gravity (champagne_nautic rope sand) (tricot nero_righe beige_kristal nero)
art. 9880 divano-dondolo_swing-sofa
art. 9885 tavolino_coffee table (top aluminum)



Gravity (champagne) (tricot nero_kristal nero_righe beige)
art. 9882 divano_sofa
art. 9886 tavolino_coffee table

(champagne_nautic rope sand) (trama bianca_pistacchio_rombi verdi)
art. 9881 divano-dondolo sospeso_Swing-sofa

GRAVITY IS ABOUT FANTASY

Elegante leggerezza e forme accoglienti, per vivere l'outdoor senza confini, immersi in un'intima naturalezza.

Elegant lightness and cosy shapes, to live your outdoor experience in full freedom, immersed in an individual perspective.



Gravity (champagne_nautic rope sand) (oceano_emerald_petra sabbia)
art. 9884C divano-dondolo_swing-sofa (light version)
art. 9885 tavolino_coffee table



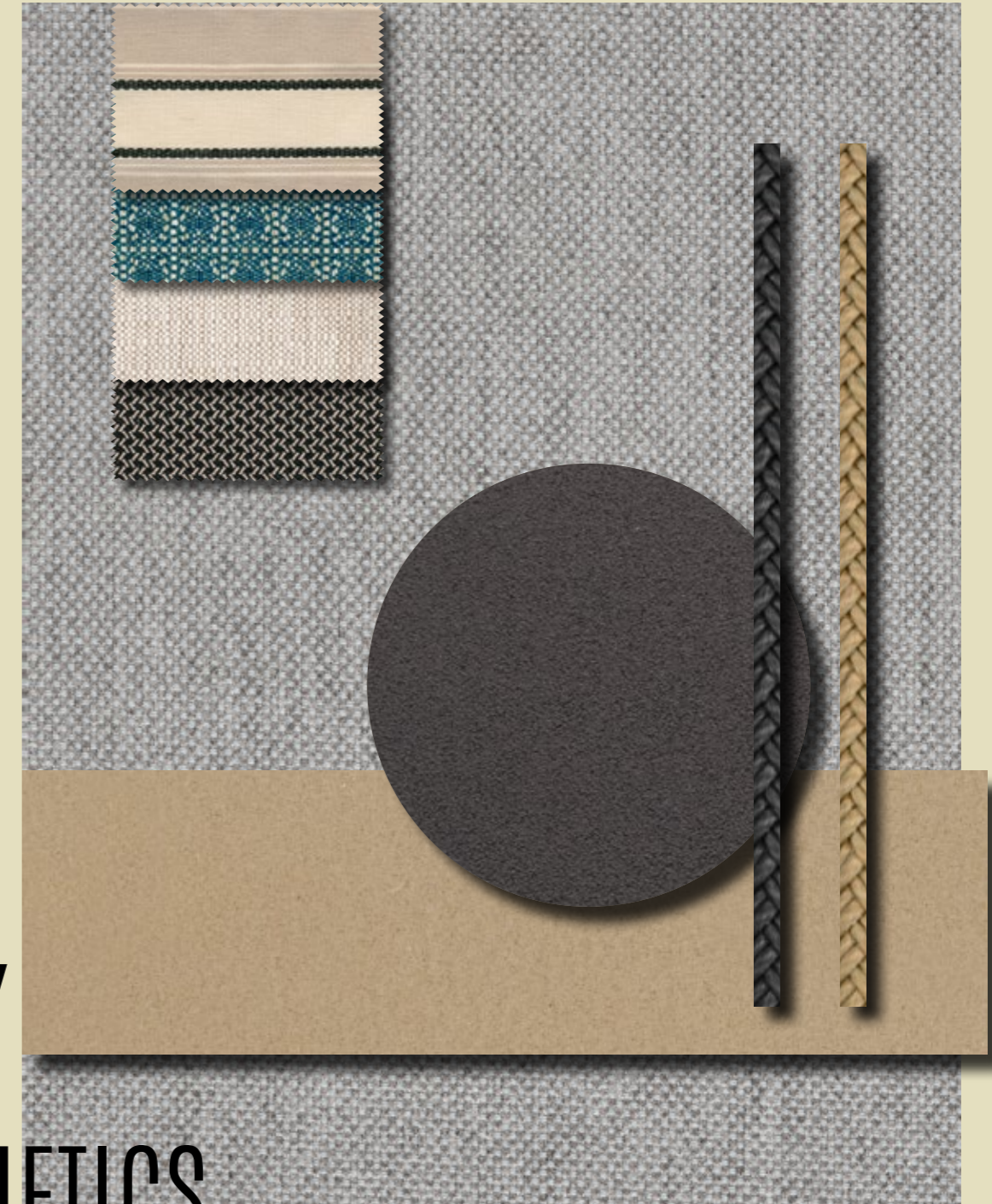
Gravity (champagne_nautic rope sand) (oceano_emerald_petra sabbia)
art. 9884 divano-dondolo_swing-sofa (light version)





Gravity (champagne) (azzurro mare_trama bianca_orient azzurro)
art. 9882 divano_Sofa
art. 9886 tavolino_coffee table

GRAVITY
IS AESTHETICS





Gravity (graphite_nautic rope black) (arabesque_tricot nero_righe beige)
art. 9883 divano-dondolo_swing-sofa (light version)
art. 9885 tavolino_coffee table



Gravity (graphite) (tricot nero_arabesque)
art. 9882 divano_Sofa

GRAVITY IS POSITIVE ATTITUDE

Avvolgente e morbido come un luogo conosciuto, un'architettura in movimento per riconnettersi con sè stessi.

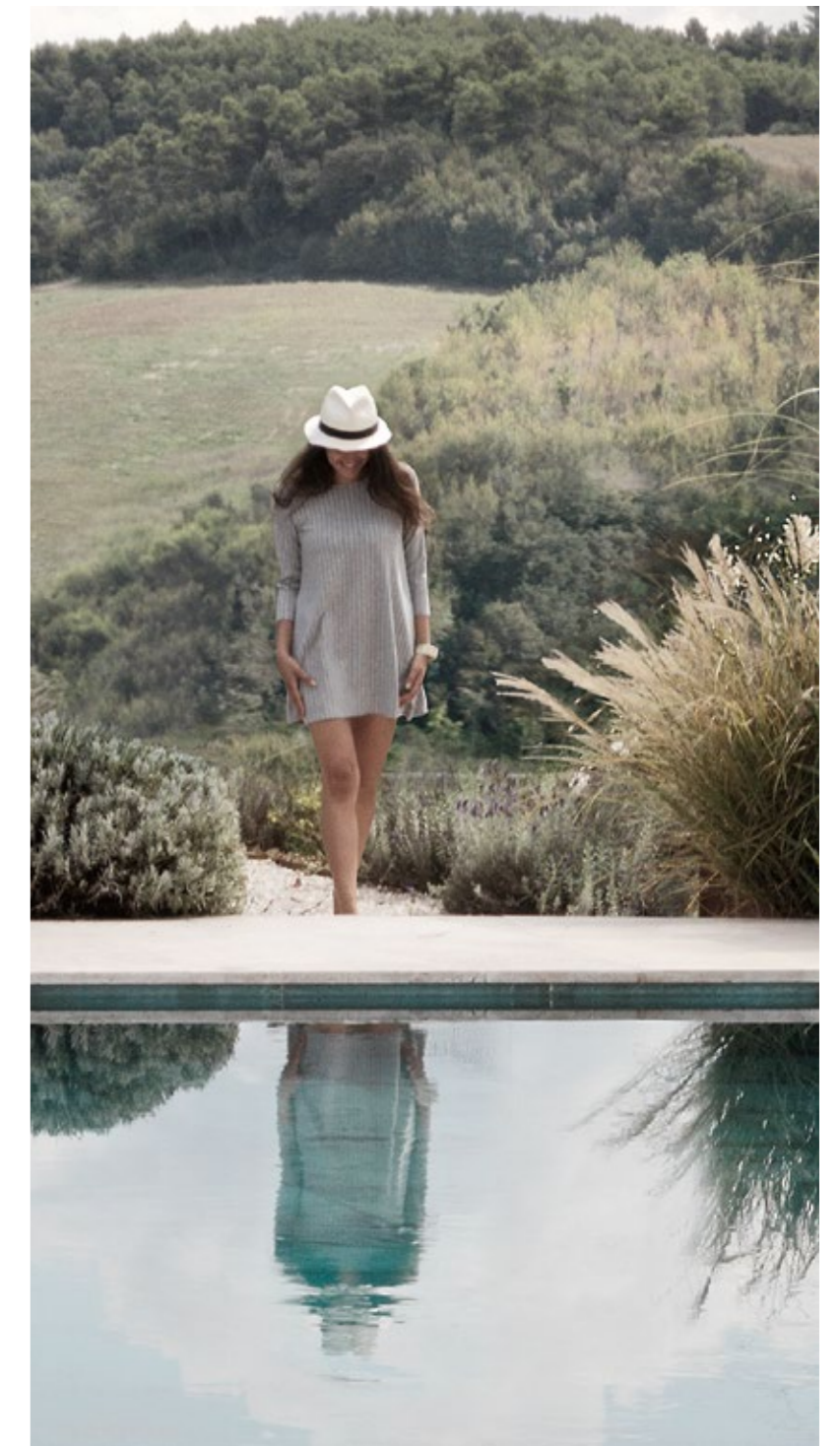
Enveloping and smooth like a familiar place, a moving architecture to reconnect with ourselves.



Gravity (graphite_nautic rope black) (tricot nero_kristal nero_arabesque)
art. 9881 divano-dondolo sospeso_Swing-sofa



Gravity (graphite_nautic rope black) (tricot nero_kristal nero_arabesque)



MARATEA



Semplici geometrie dove combinazioni ricercate di linee e materiali diventano la sintesi di un pensiero contemporaneo e danno origine ad atmosfere uniche, per un ambiente che respira una forte sensazione di libertà.

Simple lines where refined combinations of concepts and materials are feature of a contemporary vision and generate unique atmospheres in an environment that discloses a deep sense of freedom.

Einfache Geometrien, in denen raffinierte Kombinationen von Linien und Materialien zur Synthese eines zeitgenössischen Gedankens werden und einzigartige Atmosphären schaffen, für eine Umgebung, die ein starkes Gefühl der Freiheit atmet.

Des géométries simples où des combinaisons raffinées de lignes et de matériaux deviennent la synthèse d'une idée contemporaine et donnent lieu à des atmosphères uniques, pour un environnement qui respire une forte sensation de liberté.



Maratea (terra_batyline land)
art. 9911 sedia_chair art. 9916 base tavolo_table base art. 9686 piano_top (hpl corten)



Maratea (terra_batylina land)
art. 9911 sedia_chair art. 9916 base tavolo_table base art. 9686 piano_top (hpl corten)

MARATEA IS CONTEMPORARY

Un mood materico che valorizza le forme. Una collezione in dialogo costante con il panorama esterno e con una minimale completezza stilistica.

A materic mood that emphasizes the shapes. A collection perfectly configured in the outdoor setting, with a simple stylistic fulfillment.



Maratea (terra_batylina land)
art. 9911 sedia_chair



Maratea (white_tensiline ice)
art. 9911 sedia_chair art. 9915 base tavolo_table base art. 9682 piano_top (hpl marble white)



Maratea (white_tensiline ice)
art. 9911 sedia_chair art. 9915 base tavolo_table base art. 9682 piano_top (hpl marble white)

Technical Data & Materials

IT Tutte le strutture sono realizzate in alluminio e/o acciaio inox Aisi 304, con finitura a polveri a garanzia di leggerezza, durata e resistenza agli agenti atmosferici.

Gli intrecci in corda vengono realizzati con Trendy rope, la nuova corda in poliestere testato IMO e Nautic Rope, sempre in poliestere.

La nuova corda Trendy rope, realizzata in varie colorazioni, viene utilizzata nelle nuove collezioni Armàn, Corolle, Charme, Oasi e Queen alle quali dona un tocco di unicità e solarità. Particolarmente resistente agli agenti atmosferici ed ai raggi UV, può essere utilizzata non solo in ambito residenziale e contract, ma anche in ambienti navali.

La corda Nautic Rope viene utilizzata nella collezione Gravity e risulta perfetta per appendere il dondolo in quanto robusta e resistente all'acqua ed alla salsedine.

Nella collezione Maratea viene impiegato il tessuto Tensiline-Batyline (pvc-poliestere). La sua composizione microforata, che facilita l'aerazione ed il drenaggio, lo rende particolarmente resistente al caldo, al freddo ed all'acqua salata. Tale tessuto è ignifugo testato IMO, trattato antimuffa ed antibatterico.

I piani dei tavoli sono in HPL (high pressure laminate) perfettamente idonei per uso esterno, nelle nuove finiture: Marble White e Marble Nut. Nelle collezioni Armàn e Charme vengono previsti inoltre piani in Terrazzo (graniglia Veneziana con inserti in madreperla, trattata con idrorepellente incolore) che danno alle combinazioni un tocco materico e stiloso.

La manutenzione di tutti i mobili è oltremodo semplice: lavare sia le strutture che le parti intrecciate con acqua fredda e sapone neutro aiutandosi con una spazzola a setole morbide ed una spugna. Sciacquare con acqua fredda e far asciugare bene all'aria. Non usare detergenti aggressivi o prodotti al cloro. Per maggiori dettagli si raccomanda la lettura del cartellino 'Cura e Manutenzione' che viene fornito alla consegna dei prodotti. La durata dei mobili è subordinata ad un corretto utilizzo e ad una adeguata manutenzione come da noi suggerito. Si declina ogni responsabilità per danni a persone o cose causati da uso improprio ed atti vandalici.

Roberti si riserva la facoltà di apportare modifiche o migliorie senza alcun preavviso.

EN All structures are in aluminum and/or Aisi 304 stainless steel powder coated to ensure lightness, durability and resistance to atmospheric agents.

Weavings consist of Trendy rope, the new rope in polyester IMO tested and of Nautic Rope in polyester as well.

The new Trendy rope is available in various colors and is used for the brand new collections Armàn, Corolle, Charme, Oasi and Queen giving a special unique touch and brightness. It is specially very strong to weather conditions and to UV rays and can be placed in residential / hospitality projects as well as in marine installations.

The Nautic Rope is used for Gravity collection and is perfect for hanging the swing as it is robust; it can withstand water and sea spray.

For Maratea collection we use the Tensiline-Batyline fabric (pvc and polyester). With its open structure allowing aeration and water drainage it withstands heat, cold, water and sea spray. This fabric is fireproof IMO tested, anti-mold and antibacterial.

Table tops are in HPL (high pressure laminate) suitable for outdoor use available in the new finishes: Marble White and Marble Nut. In addition tops made of Terrazzo have been foreseen for Armàn and Charme collections (Venetian grit with mother-of-pearl inserts, treated with neutral water repellent) giving a material and stylish touch.

The maintenance of all furniture is very easy, just wash it with cold water and neutral soap, using a soft brush and a sponge if necessary, then rinse with cold water and let it air dry.

Do not use aggressive detergents or chlorine. For more detailed instructions please carefully read and follow our "Care and Maintenance" leaflet joined to the furniture on delivery.

The durability of furniture is subject to proper use as well as to right maintenance as per our instructions; we deny any responsibility for damages caused by improper use or vandalism.

Roberti has the right to modify or upgrade the product without prior notice.

DE Alle Möbel-Gestelle sind aus Aluminium und/oder Edelstahl Aisi 304 pulverbeschichtet die Leichtigkeit, Widerstandsfähigkeit gegen Witterungseinflüsse und Langlebigkeit garantieren.

Für die geflochtene Teile werden Trendy rope (Neues Seil mit Polyester Faser IMO geprüft) und Nautic Rope (immer mit Polyester Faser) verwendet.

Das neue Seil Trendy rope ist lieferbar in verschiedenen Farben und wird für die neuen Kollektionen Armàn, Corolle, Charme, Oasi und Queen verwendet.

Es schenkt einen Hauch von Einzigartigkeit und Helligkeit. Sehr beständig gegen Witterungseinflüsse und UV-Strahlen, kann das Seil für den Wohn-Objektbereich sowie auch für Installationen auf Schiffen verwendet werden.

Das Seil Nautic Rope wird für die Kollektion Gravity benützt und ist perfekt für die Aufhängung der Schaukel geeignet, weil es sehr robust und widerstandsfähig gegen Wasser und Salzigkeit ist.

Für die Kollektion Maratea wird der Stoff Tensiline-Batyline (Pvc-Polyester) verwendet. Seine mikroperforierte Struktur, die eine gute Belüftung und Entwässerung erlaubt, ist Hitze- und Kälte sehr beständig sowie auch gegen Salzwasser. Dieser Stoff ist feuerfest IMO geprüft mit Antischimmel- und antibakterielle Behandlung.

Die Tischplatten sind aus HPL (High Pressure Laminate), geeignet für den Außenbereich, in neuen Ausführungen: Marble White und Marble Nut. In den Kollektionen Armàn und Charme werden noch die Platten aus Terrazzo vorgesehen (Venezianischer Splitt mit Perlmutt-Einsätzen und neutral-wasserabweisender Anfertigung), die ein Hauch von Material und Stil für die Kombinationen gibt.

Die Pflege der Möbel ist leicht: einfach die Möbelteile mit Wasser und neutraler Seife reinigen, evtl. mit der Hilfe einer weichen Bürste, dann mit kaltem Wasser abspülen und trocknen lassen. Die Verwendung von aggressiven Reinigungsmitteln und Chlor sind absolut zu vermeiden. Wir bitten, die auf unseren "Care and Maintenance" Brochüre angegeben Empfehlungen, aufmerksam zu folgen. Die Brochüre wird mit den Möbel geliefert. Die Langlebigkeit der Möbel ist mit einer ordentlichen Verwendung verbunden. Wir lehnen jegliche Verantwortung für missbräuchliche Verwendung ab.

Roberti behält sich das Recht vor, ohne jegliche Benachrichtigung, Änderungen oder Produkt-Verbesserungen vorzunehmen.

FR Toutes les structures sont en aluminium et/ou en acier inoxydable Aisi 304 traités avec une finition spéciale pour extérieur qui garantie résistance aux agents atmosphériques ainsi que durabilité.

Pour les parties tressées on utilise Trendy rope la nouvelle corde en fil de polyester certifié IMO et Nautic Rope, également en fil de polyester.

La nouvelle corde Trendy rope, réalisée en différentes couleurs, est utilisée pour les nouvelles collections Armàn, Corolle, Charme, Oasi et Queen, et donne une touche unique et solaire. Avec une très forte résistance aux agents atmosphériques et aux rayons UV elle peut être utilisée pour le résidentiel et le secteur Ho.re.ca et tout bien pour endroits navals.

La corde Nautic Rope est utilisée pour la collection Gravity et est parfaite pour la suspension de la balançoire, car très robuste et résistante à l'eau et à la salure.

Pour la collection Maratea on utilise le tissu Tensiline-Batyline (pvc-polyester). Sa composition ajourée permet l'aération et le drainage, est résistante à la chaleur, au froid et à l'eau de mer. Ce tissu est ignifuge certifié IMO, anti-moisissure et antibactérien.

Les dessus des tables sont en HPL (high pressure laminate) bien adaptés pour l'installation à l'extérieur avec les nouvelles finitions: Marble White et Marble Nut. Pour les collections Armàn et Charme on a prévu en outre les dessus en Terrazzo (Granulats à la Vénitienne avec inserts en nacre, traités avec une finition hydrofuge incolore) qui donnent aux combinaisons une touche de matière et de style.

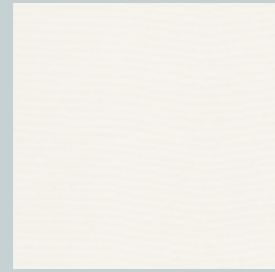
L'entretien des meubles est très simple: il faut laver les meubles avec de l'eau froide et savon neutre en utilisant une brosse souple. Après rincer et faire essuyer à l'air. Il faut absolument éviter l'utilisation de détergents agressifs ou du chlore. Nous conseillons de lire et suivre les instructions indiquées dans la brochure "Care and Maintenance" que nous attachons aux meubles au moment de la livraison. La durée des meubles est donc en rapport à un usage et un soin correct: Nous déclinons toute responsabilité pour des dégâts provoqués par une mauvaise utilisation ou actes de vandalisme.

Roberti se réserve la faculté d'apporter des modifications ou améliorations aux produits sans aucun préavis.

Materials

Finiture

finishes_Färbungen_finitions



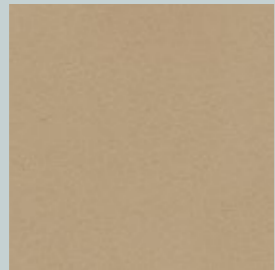
White
Charme_Queen
Oasi_Maratea
collections



Bronze
Armàn_Charme_Queen
collections



Forest
Oasi collection



Champagne
Armàn_Gravity
collections



Terra
Maratea collection



Graphite
Corolle_Gravity
collections

Corde

ropes_Seile_cordes



**Oval Trendy rope
Caramel Mix**
100% polyester (IMO tested)
Armàn collection



**Oval Trendy rope
Walnut Mix**
100% polyester (IMO tested)
Armàn_Corolle collections



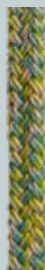
**Oval Trendy rope
Orange Mix**
100% polyester (IMO tested)
Corolle collection



**Oval Trendy rope
Mint Mix**
100% polyester (IMO tested)
Corolle collection



**Flat Trendy rope
White Mix**
100% polyester (IMO tested)
Charme collection



**Flat Trendy rope
Green Mix**
100% polyester (IMO tested)
Charme collection



**Flat Trendy rope
Cocoa Mix**
100% polyester (IMO tested)
Charme collection



**Round Trendy rope
Ivory**
100% polyester (IMO tested)
Queen collection



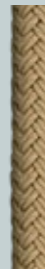
**Round Trendy rope
Ebony**
100% polyester (IMO tested)
Queen collection



**Round Trendy rope
Grass_Turquoise**
100% polyester (IMO tested)
Oasi collection



**Round Trendy rope
Clay_Nut**
100% polyester (IMO tested)
Oasi collection



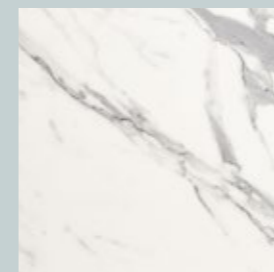
Nautic Rope Sand
100% polyester
Gravity collection



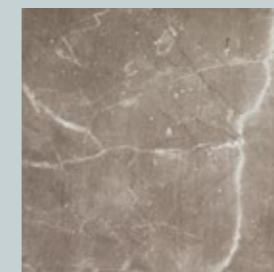
Nautic Rope Black
100% polyester
Gravity collection

Piani in hpl

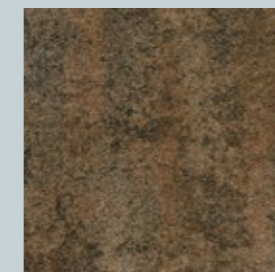
hpl_tops_Hpl-Platten_plateaux en hpl



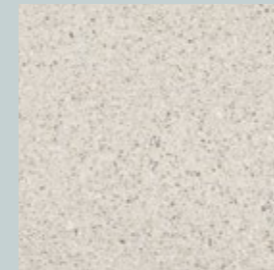
HPL Marble White
Armàn_Charme_Queen
Maratea collections



HPL Marble Nut
Armàn_Charme_Queen
collections



HPL Corten
Maratea collection



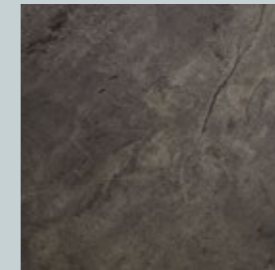
Terrazzo Perla
Armàn_Charme collection

Piano in Terrazzo
Graniglia Veneziana con
inserti in madreperla

Venetian grit with
mother-of-pearl inserts

Venezianischer Splitt mit
Perlmutter-Einsätzen

Granulats à la Vénitienne
avec inserts en nacre

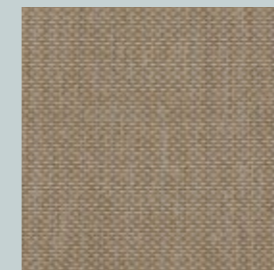


HPL Slate Stone
Corolle collection
Maratea collection

Tensiline_Batyline



Tensiline Ice
pvc-polyester (Imo tested)
Maratea collection



Batyline Land
pvc-polyester (Imo tested)
Maratea collection



Fabrics & Covers

TESSUTI

Roberti propone una vasta gamma di tessuti adatti all'uso esterno con caratteristiche diverse. Tutti hanno un'alta resistenza ai raggi UV. Sono compresi nelle seguenti categorie di prezzo:

GRUPPO A1 / A2: offre una vasta gamma di tessuti adatti ad uso esterno, acrilici (Sunbrella) ed in polipropilene/poliestere/acrilico abbinati a imbottiture in poliuretano espanso con uno speciale rivestimento in tela pvc-poliestere idrorepellente. I cuscini morbidi degli schienali ed i piccoli cuscini decorativi contengono un mix di chips di poliestere racchiusi in una federa in pvc-poliestere idrorepellente. E' questa la proposta ideale per un cuscino per esterno ove si unisce il comfort di un tessuto alla garanzia di protezione dell'imbottitura.

GRUPPO B1: I tessuti della categoria B1 sono composti da pvc, poliestere e poliuretano; sono tessuti idrorepellenti. I tessuti B1 abbinati alle imbottiture in poliuretano espanso con speciale rivestimento in tela di pvc-poliestere offrono quindi una quasi totale impermeabilità all'acqua. Vi possono essere piccole infiltrazioni di acqua attraverso le cuciture e quindi per garantire una veloce asciugatura all'interno si raccomanda di aprire le cerniere ed arieggiare l'interno del cuscino regolarmente. I tessuti del gruppo B1 sono disponibili solo per alcuni modelli della collezione come specificato nel listino prezzi.

GRUPPO C1: I tessuti della categoria C1 sono composti da pvc, poliestere e poliuretano; hanno una leggera imbottitura in poliestere fissata con termosaldatura a righe orizzontali e sono idrorepellenti. I tessuti C1 abbinati alle imbottiture in poliuretano espanso con speciale rivestimento in tela di pvc-poliestere offrono quindi una quasi totale impermeabilità all'acqua. Vi possono essere piccole infiltrazioni di acqua attraverso le cuciture e quindi per garantire una veloce asciugatura all'interno si raccomanda di aprire le cerniere ed arieggiare l'interno del cuscino regolarmente. I tessuti del gruppo C1 sono disponibili solo per alcuni modelli della collezione come specificato nel listino prezzi.

I tessuti delle categorie A1/A2 possono essere lavati a mano, in acqua fredda (max. 30°C) ed asciugati all'aria. Stiratura a bassissima temperatura.

I tessuti delle categorie B1 e C1 devono essere periodicamente puliti con un panno umido e leggero detergente neutro. Devono essere regolarmente asciugati all'interno aprendo la cerniera e permettendo l'aerazione al fine di evitare il formarsi di muffe. Eventuali macchie devono essere pulite prontamente per evitare che si stabilizzino.

Si raccomanda di seguire scrupolosamente le istruzioni di lavaggio e manutenzione indicate nel cartellino qualità "Cura e Manutenzione" fornito con i mobili. Tutti i cuscini sono realizzati esclusivamente in Italia con utilizzo di imbottiture di origine italiana.

PROTECTIVE COVERS

Per una migliore protezione dei mobili consigliamo l'uso delle nostre coperture in uno speciale tessuto impermeabile (pvc + poliestere). Le coperture proteggono dalle intemperie e dal depositarsi di polveri e impurità atmosferiche. Le coperture sono disponibili per una parte dei modelli come indicato nel listino.

FABRICS

Roberti offers a wide choice of fabrics suitable for outdoor use and with peculiar features. All fabrics are UV resistant and are available in the following price ranges:

GROUP A1/A2: offers a wide choice of fabrics for outdoor use, some of them acrylic fabric from Sunbrella, some others polypropilene/polyester/acrylic fabrics, all combined with a polyurethane padding protected by a pvc-polyester cover, water repellent. The soft back pillows and the decorative pillows contain a mix of polyester chips inside a pvc polyester, water repellent, cover. This is the ideal proposal for cushions you can leave outside, combining the comfort of a fabric with the full protection of the padding.

GROUP B1: the fabrics B1 - composed of pvc, polyester and polyurethane - are water repellent. The B1 fabrics combined with padding polyurethane foams completely protected by a pvc-polyester cover offer the best waterproof solution. It can happen that water may enter through the stitches; we therefore suggest to regularly open the fabric cover zipper to permit ventilation to the inside part of the cushion. Fabrics B1 are available only for part of the collection, as specified in the pricelist.

GROUP C1: the fabrics C1 - composed of pvc-polyester and polyurethane - have a light polyester padding fixed by a thermowelding with horizontal stripes and are water repellent. The C1 fabrics combined with padding polyurethane foams completely protected by a pvc-polyester cover offer the best waterproof solution. It can happen that water may enter through the stitches; we therefore suggest to regularly open the fabric cover zipper to permit ventilation to the inside part of the cushion. Fabrics C1 are available only for part of the collection, as specified in the pricelist.

All fabrics A1/A2 can be hand washed on cold water (max. 30° C) and air dried. Ironing only at very low temperature. Fabrics B1 and C1 must be regularly cleaned with a wet cloth and a mild detergent, but not soaked.

It is also recommendable to open zippers of fabric covers regularly in order to permit ventilation inside the cushion to avoid mold stains. Stains should be immediately removed to prevent they leave an imprint.

It is highly recommendable to read and carefully follow all suggestions given in the "Care and Maintenance" leaflet delivered with the furniture.

All cushions are entirely made in Italy using paddings of Italian origin.

PROTECTIVE COVERS

For an additional protection of the furniture we suggest our weather covers, water repellent, made of pvc and polyester. The protective covers protect from weathering as well as from dust and atmospheric impurities.

The protective covers are available for part of the models as indicated in the price list.

STOFFE

Roberti bietet eine breite Auswahl an Stoffen für den Außenbereich mit unterschiedliche Eigenschaften. Alle Stoffe haben eine starke Beständigkeit gegen UV-Strahlen laut den folgenden Preiskategorien:

GRUPPE A1/A2: Breite Auswahl an Stoffen die für den Außenbereich geeignet sind: Acryl-Stoffe von Sunbrella und neue Polypropilene-Polyester-Acryl Stoffe. Die Kissen haben Polyurethanschaum überzogen mit einem Pvc-Polyestergewebe, wasserdicht. Die weichen Rückenkissen und die kleine Wurfkissen enthalten ein Mix aus Polyester-Chips und sind durch einer Pvc-Polyester Hülle, wasserabstoßend, geschützt. Diese Kombination Stoff+geschützte Kissenfüllung ist die beste Lösung für den Außenbereich und bietet den richtigen Komfort sowie eine lange Haltbarkeit des Kissens.

GRUPPE B1: Die Stoffen der Kat. B1 sind aus Pvc, Polyester und Polyurethan und wirken wasserabstoßend. Der Schaumstoff ist aus Polyurethan überzogen mit einem Pvc-Polyestergewebe, wasserdicht. Sollte etwas Wasser eindringen durch die Naht, empfehlen wir die Kissen abtrocknen zu lassen: einfach den Reißverschluss öffnen und den Kissen-Kern belüften und abtrocknen. Die B1 Stoffe sind nur für einige Modelle verwendbar, die auf der Preisliste angegeben sind.

GRUPPE C1: Die Stoffen der Kat. C1 sind aus Pvc, Polyester und Polyurethan und haben einen leichten Polyester-Schaum der mit einer waagrechten Heißversiegelung befestigt ist. Der Schaumstoff ist aus Polyurethan überzogen mit einem Pvc-Polyestergewebe, wasserdicht. Sollte etwas Wasser eindringen durch die Naht, empfehlen wir die Kissen abtrocknen zu lassen: einfach den Reißverschluss öffnen und das Kissen-Kern belüften und abtrocknen. Die C1 Stoffe sind nur für einige Modelle verwendbar, die auf der Preisliste angegeben sind.

Die Stoffen der Kat.A1/A2 sind Hand waschbar (kaltes Wasser max. 30°C) und müssen an die Luft trocknen. Bügeln nur mit sehr niedriger Temperatur.

Die Stoffen der Kat. B1 und C1 müssen regelmäßig mit einem feuchtem Lappen und neutraler Seife gereinigt werden. Um Schimmel-Bildungen zu vermeiden, empfehlen wir ein regelmäßiger Kissen-Abtrocknen: Stoff-Hülle öffnen und das Innenleben des Kissen belüften und abtrocknen. Ev. Flecken müssen sofort entfernt werden.

Wir bitten die Pflegehinweise auf unserem Qualitäts-Schild "Care and Maintenance" (geliefert mit den Möbeln) genau zu beachten.

Alle Kissen sind ausschließlich in Italien hergestellt mit italienischem Schaumstoff.

PROTECTIVE COVERS

Für einen besseren Schutz der Möbel, bieten wir wasserdichte Schutzhüllen aus Pvc und Polyester. Dadurch werden die Möbel vom Unwetter sowie auch vom atmosphärischen Unreinheiten bewahrt. Die Schutzhüllen sind nur für sämtliche Modellen - wie in der Preisliste angegeben - erhältlich.

TISSUS

Roberti offre une large gamme de tissus conseillés pour l'extérieur avec des caractéristiques différentes. Tous les tissus sont résistants aux rayons UV et sont représentés par les suivantes catégories de prix:

GROUPE A1/A2: offre une large gamme de tissus pour l'extérieur avec des rembourrages des coussins en polyuréthane revêtus avec un tissu en pvc-polyester-acryl imperméable. Une partie des tissus est en acryl (Sunbrella) et une partie en polypropilene / polyester / acryl. Le rembourrage des coussins souples des dos et les petits coussins décoratifs sont en chips de polyester enfermés dans une housse en pvc polyester imperméable à l'eau. Cela est la proposition idéale pour des coussins pour l'extérieur tout en assurant les confort des tissus et la résistance à l'eau des rembourrages.

GROUPE B1: Les tissus B1 sont en pvc, polyester et polyuréthane; ils sont des tissus hydrofuges. Les mousses de rembourrages sont toujours enfermées dans les revêtements en pvc-polyester ainsi le coussins est presque complètement imperméable. Il peut y avoir un passage d'eau très léger à travers les coutures. Nous conseillons donc d'ouvrir les fermetures éclair et faire sécher la partie intérieure du coussin avec régularité. Ça évitera la formation de moisissure à l'intérieur. Les tissus B1 sont disponibles uniquement pour certains modèles de la collection, comme specifié dans la liste des prix.

GROUPE C1: Les Tissus C1 sont en pvc, polyester et polyuréthane; ils ont un rembourrage léger en polyester fixé per thermoscellage à bandes horizontales. Il sont des tissus imperméables à l'eau. Les mousses de rembourrages sont toujours enfermées dans les revêtements en pvc-polyester ainsi le coussins est presque complètement imperméable. Il peut y avoir un passage d'eau très léger à travers les coutures. Nous conseillons donc de ouvrir les fermetures éclair et faire sécher la partie intérieure du coussin avec régularité. Ça évitera la formation de moisissure à l'intérieur. Les tissus C1 sont disponibles uniquement pour certains modèles de la collection, comme specifié dans la liste des prix.

Tous les tissus A1/A2 peuvent être lavés à la main avec eau froide (max. 30°C) et doivent sécher à l'air. Tous les tissus B1 et C1 peuvent être nettoyés en utilisant un chiffon souple et une solution nettoyante douce, sans les laver. S'il y a des taches il faut les enlever au plus vite avant qu'elles se fixent. Nous conseillons de faire sécher tous les coussins avec régularité en ouvrant la fermeture éclair des housses et permettant la ventilation.

Toutes les instructions pour l'entretien et nettoyage indiquées dans la fiche qualité "Care and Maintenance" fournie avec les meubles sont à suivre avec attention. Tous les coussins sont réalisés exclusivement en Italie en utilisant des matériaux de rembourrage «made in Italy».

PROTECTIVE COVERS

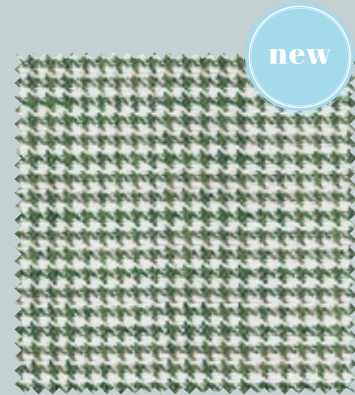
Pour une meilleure protection des meubles nous conseillons des housses en tissu pvc et polyester imperméables.

Les housses de protection protègent des intempéries ainsi que des poussières et impuretés atmosphériques. Elles sont disponibles pour une partie des modèles comme indiqué dans la liste des prix.



Fabrics & Covers

POLYPROPYLENE (PP) - POLYESTER (PL) - ACRILIC (PC)



new

Pied de poule verde
60% PP 40% PL
martindale 40.000
cat. A2
Imo tested



new

Fiori lime
100% PL
martindale 40.000
cat. A2
Imo tested



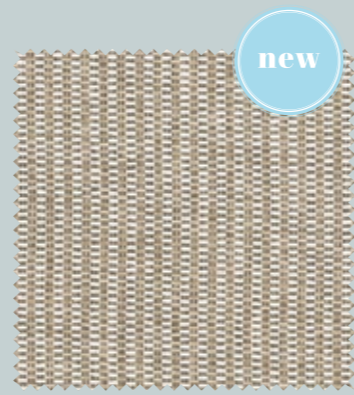
new

Pied de poule arancio
60% PP 40% PL
martindale 40.000
cat. A2
Imo tested



new

Fiori arancio
100% PL
martindale 40.000
cat. A2
Imo tested



new

Stuoia melange
60% PP 40% PL
martindale 40.000
cat. A2
Imo tested

POLYPROPYLENE (PP)_POLYESTER (PL)



new

Foglie ocra
100% PP
martindale 40.000
cat. A1
Imo tested



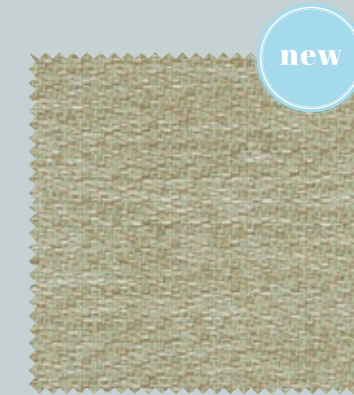
new

Foglie oliva
100% PP
martindale 40.000
cat. A1
Imo tested



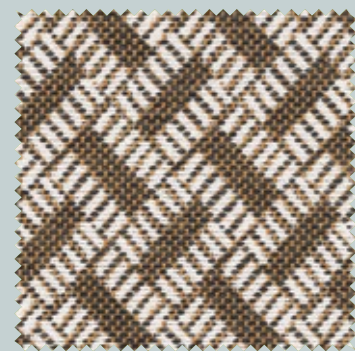
new

Pastello nocciola
100% PP
martindale 42.000
cat. A1
Imo tested

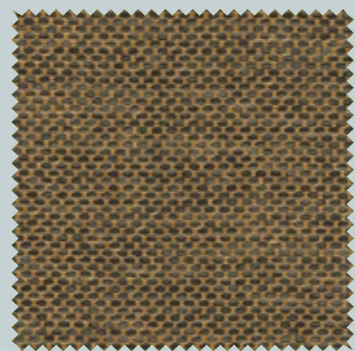


new

Pastello salvia
100% PP
martindale 42.000
cat. A1
Imo tested



Almond brown
63%PP+37%PL
50.000 martindale
cat. A2
Imo tested



Hazel
63%PP+37%PL
50.000 martindale
cat. A2
Imo tested



Senape
100%PP
35.000 martindale
cat. A1
Imo tested



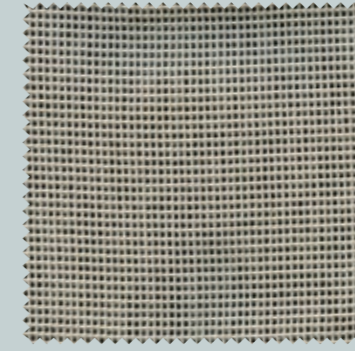
Almond milk
63%PP+37%PL
50.000 martindale
cat. A2
Imo tested



Zaffiro ecru
63%PP+37%PC
60.000 martindale
cat. A2



Petra panna
100% PP
martindale 45.000
cat. A1
Imo tested



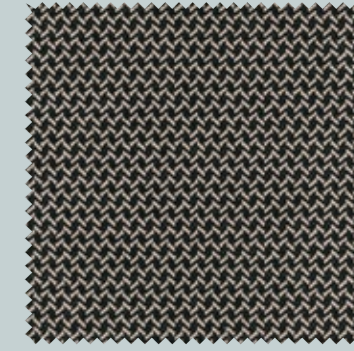
Tricot nero
55% PP 45% PL
martindale 25.000
cat. A1
Imo tested



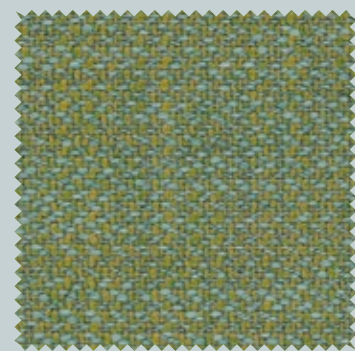
Kristal nero
63% PP 37% PL
martindale 18.000
cat. A1
Imo tested



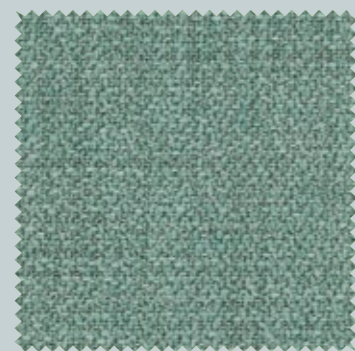
Righe beige
52% PL 48% PP
martindale 18.000
cat. A1
Imo tested



Arabesque
100% PP
martindale 40.000
cat. A1
Imo tested



Zaffiro laguna
63%PP+37%PC
60.000 martindale
cat. A2



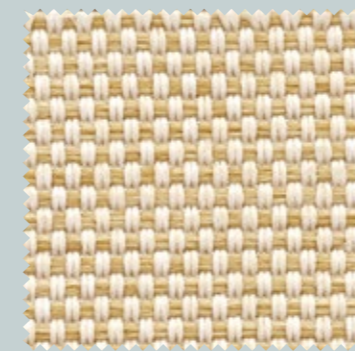
Zaffiro cielo
63%PP+37%PC
60.000 martindale
cat. A2



Fiordaliso night
100%PP
40.000 martindale
cat. A1
Imo tested



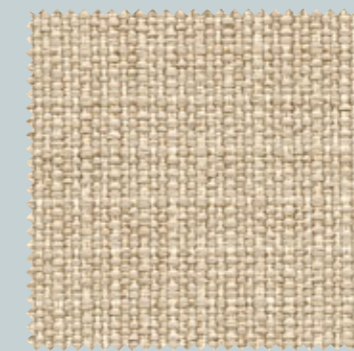
Fiordaliso art
100%PP
40.000 martindale
cat. A1
Imo tested



Mosaic oromix
100% PP
martindale 50.000
cat. A1
Imo tested



Kristal oromix
63% PP 37% PL
martindale 18.000
cat. A1
Imo tested



Petra sabbia
100% PP
martindale 45.000
cat. A1
Imo tested



Dune beige
100% PP
martindale 40.000
cat. A1

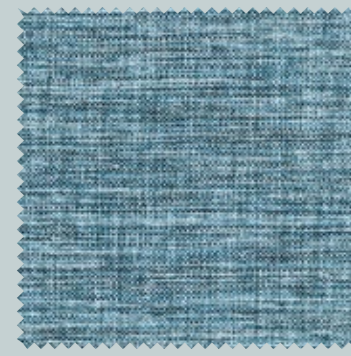


Iride beige
100% PP
martindale 45.000
cat. A1

POLYPROPYLENE (PP)_POLYESTER (PL)



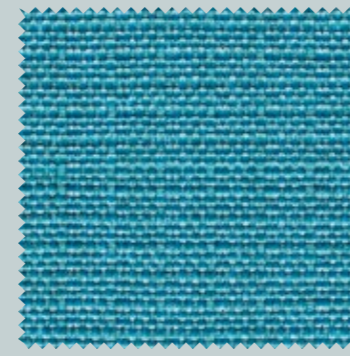
Azzurro polvere
100% PP
martindale 45.000
cat. A1
Imo tested



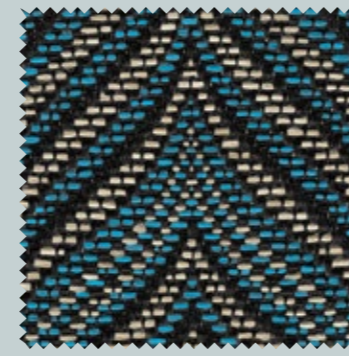
Iride turchese
100% PP
martindale 40.000
cat. A1



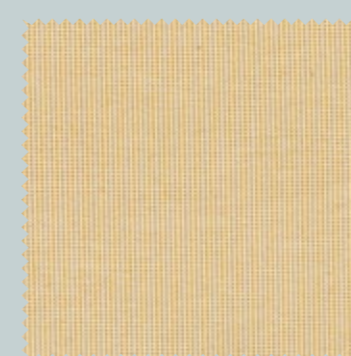
Dune turchesi
100% PP
martindale 40.000
cat. A1



Petra azzurro
100% PP
martindale 45.000
cat. A1
Imo tested



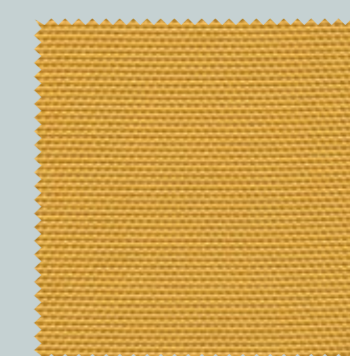
Onde azzurro
60% PP 40% PL
martindale 20.000
cat. A1
Imo tested



Tricot ocra
55% PP 45% PL
martindale 25.000
cat. A1
Imo tested



Kristal ocra
63% PP 37% PL
martindale 18.000
cat. A1
Imo tested



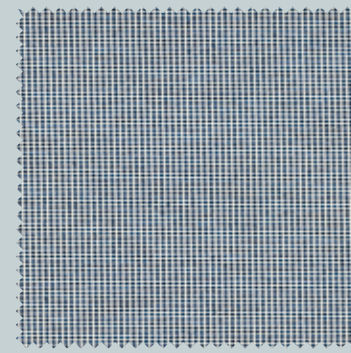
Mosaic ocra
100% PP
martindale 50.000
cat. A1
Imo tested



Rombi verdi
100% PP
martindale 25.000
cat. A1



Pistacchio
100% PP
martindale 35.000
cat. A1



Tricot blu
55% PL 45% PP
martindale 25.000
cat. A1
Imo tested



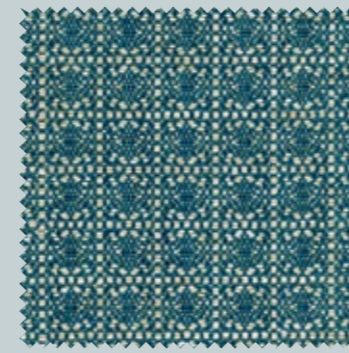
Kristal blu
63% PP 37% PL
martindale 18.000
cat. A1
Imo tested



Mosaic blu
100% PP
martindale 50.000
cat. A1
Imo tested



Oceano
100% PP
martindale 40.000
cat. A1



Emerald
100% PP
martindale 40.000
cat. A1



Bianco
100% PC
martindale 20.000
cat. A1



Noce
100% PC
martindale 20.000
cat. A1



Brownies
100% PC
martindale 15.000
cat. A1



Natte bianco
100% PC
martindale 16.000
cat. A1



Natte erica
100% PC
martindale 16.000
cat. A1



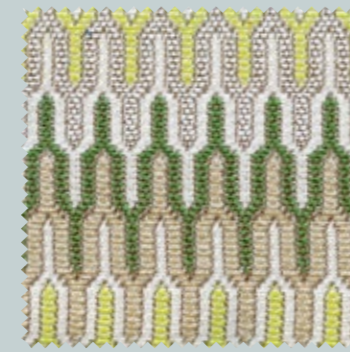
Azzurro mare
55% PP 45% PL
martindale 20.000
cat. A1
Imo tested



Righe azzurro
55% PP 45% PL
martindale 20.000
cat. A1
Imo tested



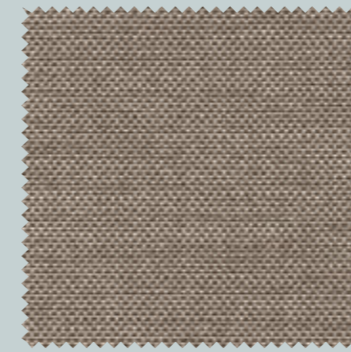
Orient azzurro
60% PP 40% PL
martindale 20.000
cat. A1



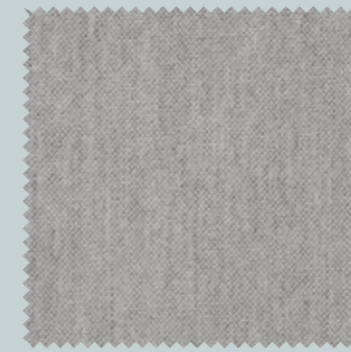
Orient verde
60% PP 40% PL
martindale 20.000
cat. A1



Trama bianca
100% PP
martindale 35.000
cat. A1



Natte fumo
100% PC
martindale 19.000
cat. A1



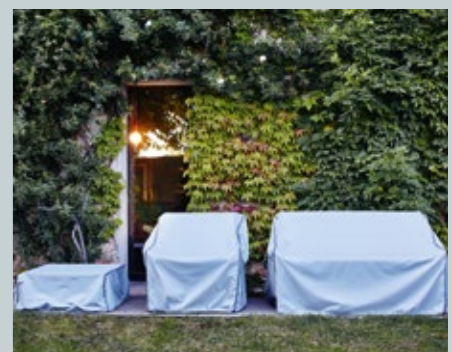
Natte grigio
100% PC
martindale 19.000
cat. A1



Natte azzurro
100% PC
martindale 17.000
cat. A1



Tortora
100% PC
martindale 15.000
cat. A1



Covers
pvc-pl

I tessuti del gruppo B1 (Nautic white - Nautic taupe) e C1 (Nautic stripe white - Nautic stripe taupe) sono visionabili ONLINE.
Fabrics of group B1 (Nautic white - Nautic taupe) and C1 (Nautic stripe white - Nautic stripe taupe) are viewable ONLINE.

DRAWINGS



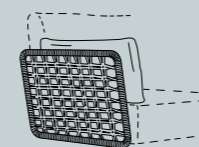
Armàn

Santiago Sevillano



Nato a Valencia nel 1975. Santiago Sevillano ha studiato design industriale all'ESDI CEU, poi si è specializzato al Politecnico di Valencia e alla Scuola di Architettura. Nel 2003 ha fondato il suo studio a Valencia.

Born in Valencia in 1975. Santiago Sevillano is a young designer who studied industrial design at the ESDI CEU, later specializing at the Polytechnic University in Valencia and at the School of Architecture. In 2003 he founded his studio in Valencia.



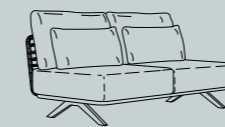
art. 7100
cm 80x5x50h



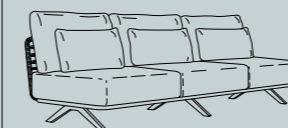
art. 7101
cm 80x5x50h



art. 7111
cm 82x95x85h
(hs. cm 20+23)



art. 7112
cm 164x95x85h
(hs. cm 20+23)



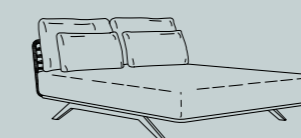
art. 7113
cm 246x95x85h
(hs. cm 20+23)



art. 7114
cm 82x82x43h
(hs. cm 20+23)



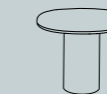
art. 7115
cm 82x175x85h
(hs. cm 20+23)



art. 7116
cm 164x212x85h
(hs. cm 20+23)



art. 7118H
cm 25x75x32h



art. 7130H
hpl top
cm 54x54x45h
design_Lab Roberti



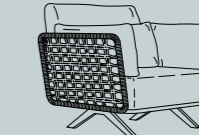
art. 7130T
terrazzo top
cm 54x54x46h
design_Lab Roberti



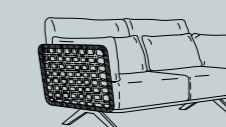
art. 7131H
hpl top
cm 70x70x39h
design_Lab Roberti



art. 7131T
terrazzo top
cm 70x70x40h
design_Lab Roberti



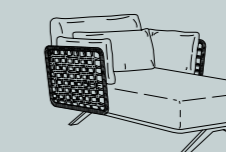
art. 71A3
cm 106x95x85h
(hs. cm 20+23)



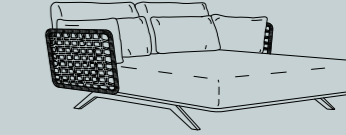
art.72A4
cm 188x95x85h
(hs. cm 20+23)



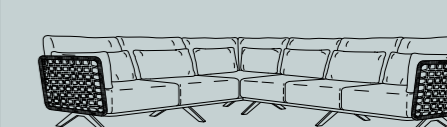
art.73A5
cm 270x95x85h
(hs. cm 20+23)



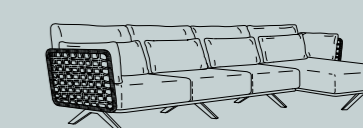
art.75A3
cm 106x175x85h
(hs. cm 20+23)



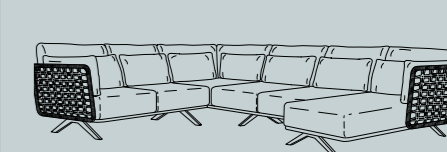
art. 78A4
cm 188x212x85h
(hs. cm 20+23)



art.7136
cm 352x270x95x85h
(hs. cm 20+23)



art.7140
cm 352x95/175x85h
(hs. cm 20+23)



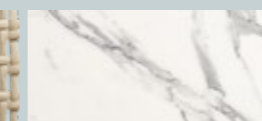
art.7141
cm 352x270x95/175x85h
(hs. cm 20+23)



Champagne



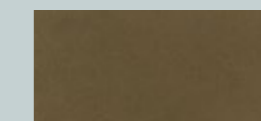
Oval Trendyrope
Walnut Mix



Hpl Marble White



Terrazzo Perla



Bronze



Oval Trendyrope
Caramel Mix



Hpl Marble Nut

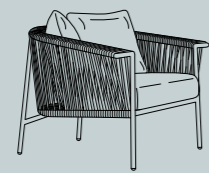
Corolle

Studio Pang

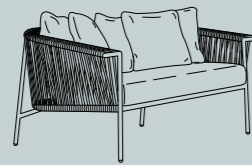


Fabio Damiani e Marco Quistini fondano Studio Pang nell'ottobre 2012. Un laboratorio in costante sviluppo, un ambiente aperto e dinamico che dà vita a una realtà professionale poliedrica e versatile.

Fabio Damiani and Marco Quistini founded Studio Pang in October 2012. A constantly evolving workshop and a dynamic open space give life to a multifaceted and versatile professional business.



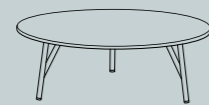
art. 4451
cm 100x87x74h
(hs. cm 31+15)



art. 4452
cm 170x87x74h
(hs. cm 31+15)



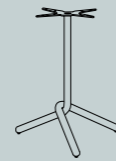
art. 4455H
hpl top
cm Ø 45x38h



art. 4456H
hpl top
cm Ø 80x28h

Maratea

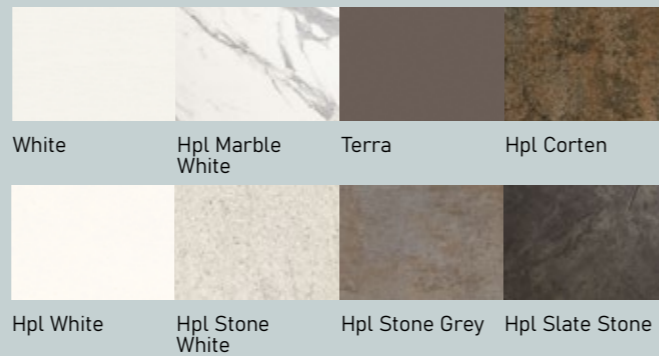
Studio Pang



art. 9915
cm 60x55x73h



art. 9916
cm 60x60x73h



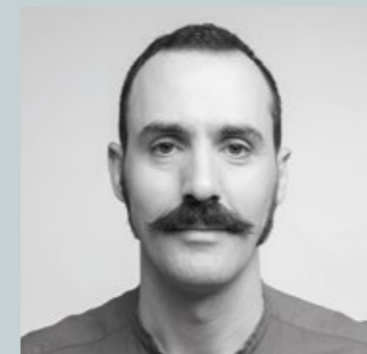
Maratea



art. 9911
cm 57x59x75h
(hs. cm 46)

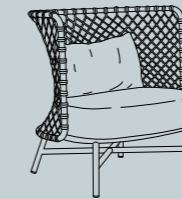
Charme

Antonio De Marco

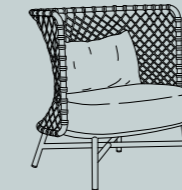


Studia al Politecnico di Milano, alla Royal Danish Academy di Copenhagen e consegue un master all'Istituto Marangoni di Milano. Oltre all'attività di progettazione insegna nel master di Design Methodology della NABA di Milano e Scuola Politecnica di Design.

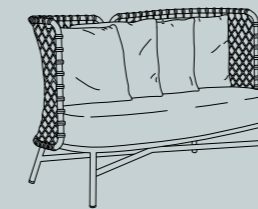
He studied at the Politecnico di Milano, at the Royal Danish Academy in Copenhagen and holds a master at the Marangoni Institute in Milan. Alongside the design activity he teaches in the Design Methodology Master of Milan's NABA and Design Polytechnic School.



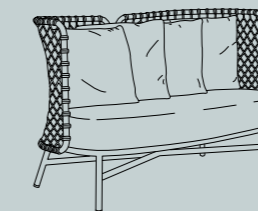
art. 4381
cm 85x88x93h
(hs. cm 30+16)



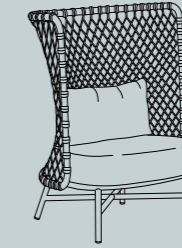
art. 4381B
cm 85x88x93h
(hs. cm 30+16)



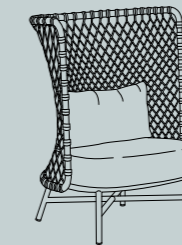
art. 4382
cm 142x88x94h
(hs. cm 30+16)



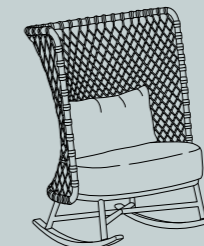
art. 4382B
cm 142x88x94h
(hs. cm 30+16)



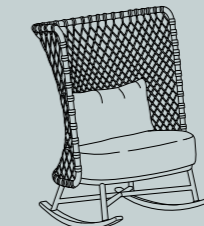
art. 4384
cm 85x89x122h
(hs. cm 30+16)



art. 4384B
cm 85x89x122h
(hs. cm 30+16)



art. 4385
cm 85x104x123h
(hs. cm 34+16)



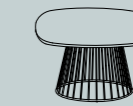
art. 4385B
cm 85x104x123h
(hs. cm 34+16)



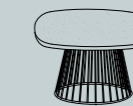
art. 4386H
hpl top
cm 54x54x41h



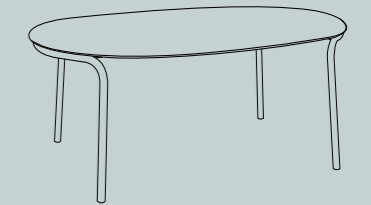
art. 4386T
terrazzo top
cm 54x54x42h



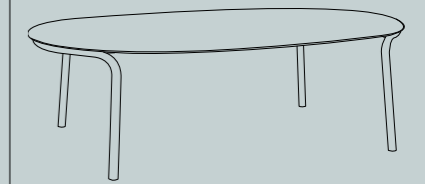
art. 4387H
hpl top
cm 70x70x35h



art. 4387T
terrazzo top
cm 70x70x36h



art. 4375
hpl top
cm 113x200x75h
design_Studio Pang



art. 4376
hpl top
cm 118x250x75h
design_Studio Pang

Charme table
Studio Pang



Graphite
Oval Trendylope Walnut Mix
Oval Trendylope Mint Mix
Oval Trendylope Orange Mix
Hpl Slate Stone



White
Tensiline Ice
Terra
Batyline Land



White
Flat Trendylope White Mix
Flat Trendylope Green Mix
Hpl Marble White
Terrazzo Perla
Bronze
Flat Trendylope Cocoa Mix
Hpl Marble Nut

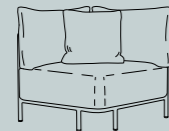
Queen

Technical Emotions

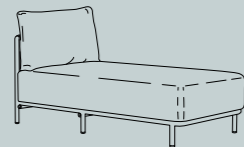


Technical Emotions è stata fondata nel 2010 dalle sorelle Alos Palop: Maria de les Neus, laureata in architettura presso l'Università Politecnica di Valencia, e Laia laureata in design industriale presso l'ESDI CEU.

Technical Emotions was founded in 2010 by Alos Palop sisters: Maria de les Neues, graduated in Architecture at the Valencia University and Laia graduated in industrial design at ESDI CEU.



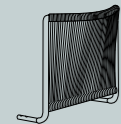
art. 4423
cm 92x92x87h
(hs. cm 17+27)



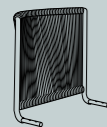
art. 4425
cm 82x167x87h
(hs. cm 17+27)



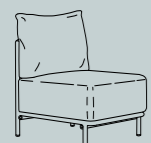
art. 4427
cm 67x79x44h
(hs. cm 17+27)



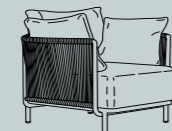
art. 4420D
cm 65x21x57h



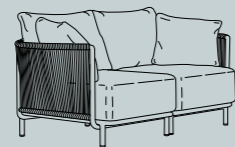
art. 4420S
cm 65x21x57h



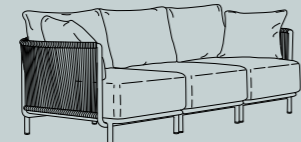
art. 4421
cm 66x88x87h
(hs. cm 17+27)



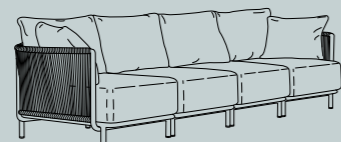
art. 4431
cm 107x88x87h
(hs. cm 17+27)



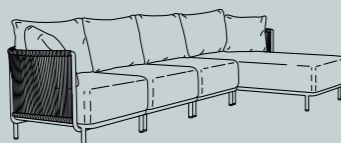
art. 4432
cm 174x88x87h
(hs. cm 17+27)



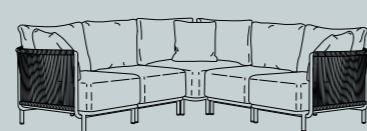
art. 4433
cm 240x88x87h
(hs. cm 17+27)



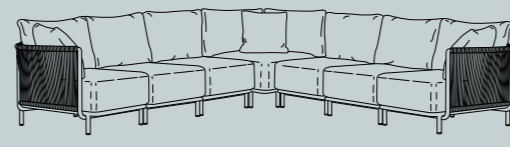
art. 4434
cm 307x88x87h
(hs. cm 17+27)



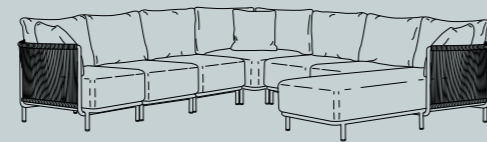
art. 4435
cm 322x88/167x87h
(hs. cm 17+27)



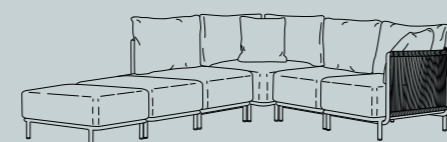
art. 4436
cm 246x246x88x87h
(hs. cm 17+27)



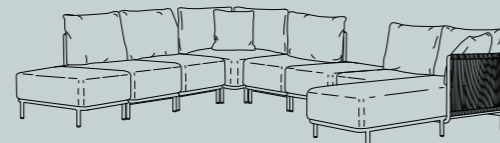
art. 4437
cm 313x313x88x87h
(hs. cm 17+27)



art. 4438
cm 313x328x88/167x87h
(hs. cm 17+27)



art. 4439
cm 292x246x88x87h
(hs. cm 17+27)

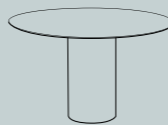


art. 4440
cm 292x394x88/167x87h
(hs. cm 17+27)

Queen_Goa
Studio Pang



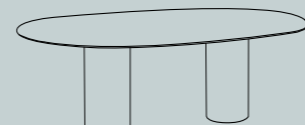
art. 4411
cm 58x56x80h
(hs. cm 43+5)
design_Studio Pang



art. 4470H
hpl top
cm Ø 130x75h
design_Lab Roberti



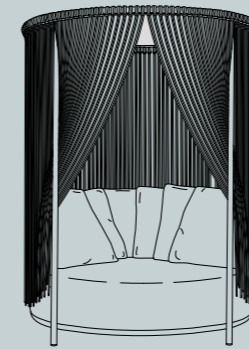
art. 4475H
hpl top
cm 113x200x75h
design_Lab Roberti



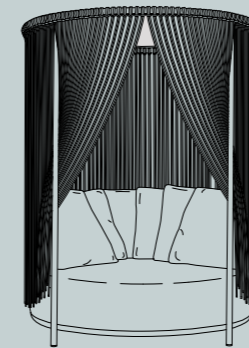
art. 4476H
hpl top
cm 118x250x75h
design_Lab Roberti

Oasi

Technical Emotions



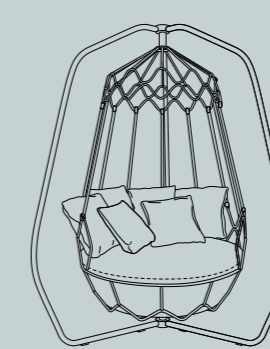
art. 4390 (white)
cm Ø 161x199h
(hs. cm 13+29)



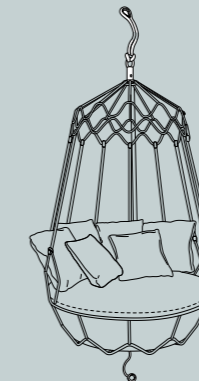
art. 4391 (forest)
cm Ø 161x199h
(hs. cm 13+29)

Gravity

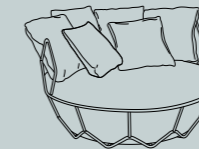
Technical Emotions



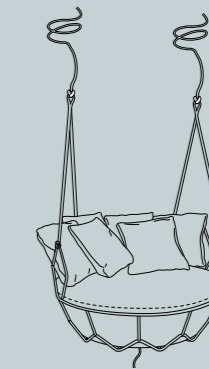
art. 9880
cm 174x167x238h
(hs. cm 60)



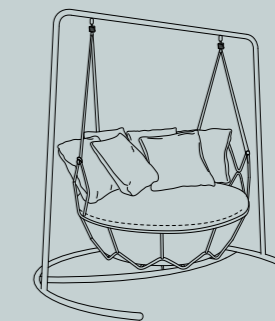
art. 9881
cm Ø 133x238h
(hs. cm 60)



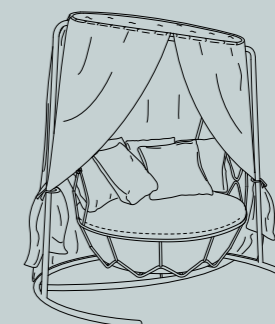
art. 9882
cm Ø 133x87h
(hs. cm 40)



art. 9883
cm Ø 133x87h
(hs. cm 56)



art. 9884
cm 195x170x196h
(hs. cm 56)



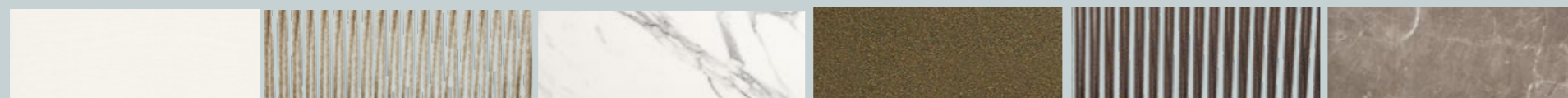
art. 9884C
cm 195x170x201h
(hs. cm 56)



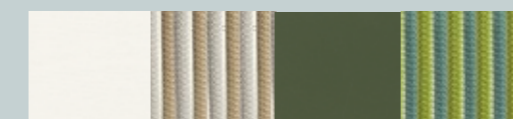
art. 9885
cm Ø 80x42h



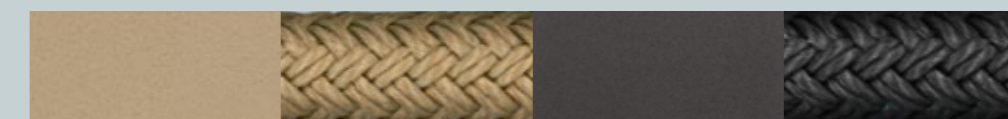
art. 9886
cm Ø 80x42h



White Round Trendy rope Ivory Hpl Marble White Bronze Round Trendy rope Ebony Hpl Marble Nut



White Round Trendy rope Clay_Nut Forest Round Trendy rope Grass_Turquoise



Champagne Nautic Rope Sand Graphite Nautic Rope Black



Registered Community Design
Modello Comunitario Registrato
Gravity Collection

NEW TRENDS

CREDITS

Concept **02studio**

Photo **Studio Rocci**

Print **Luce Group**

Thanks to:
Paola Paronetto
Laesse ceramiche
GT Design
SITAP Carpet Couture Italia

2024

Roberti[®]
OUTDOOR PLEASURE

Roberti[®]
OUTDOOR PLEASURE

ROBERTI RATTAN srl
Località Madonna di Loreto, 53/A
31020 Corbanese di Tarzo (TV) - ITALY
tel. +39 0438 933022 | fax +39 0438 933005

info@robertirattan.com
www.robertirattan.com